

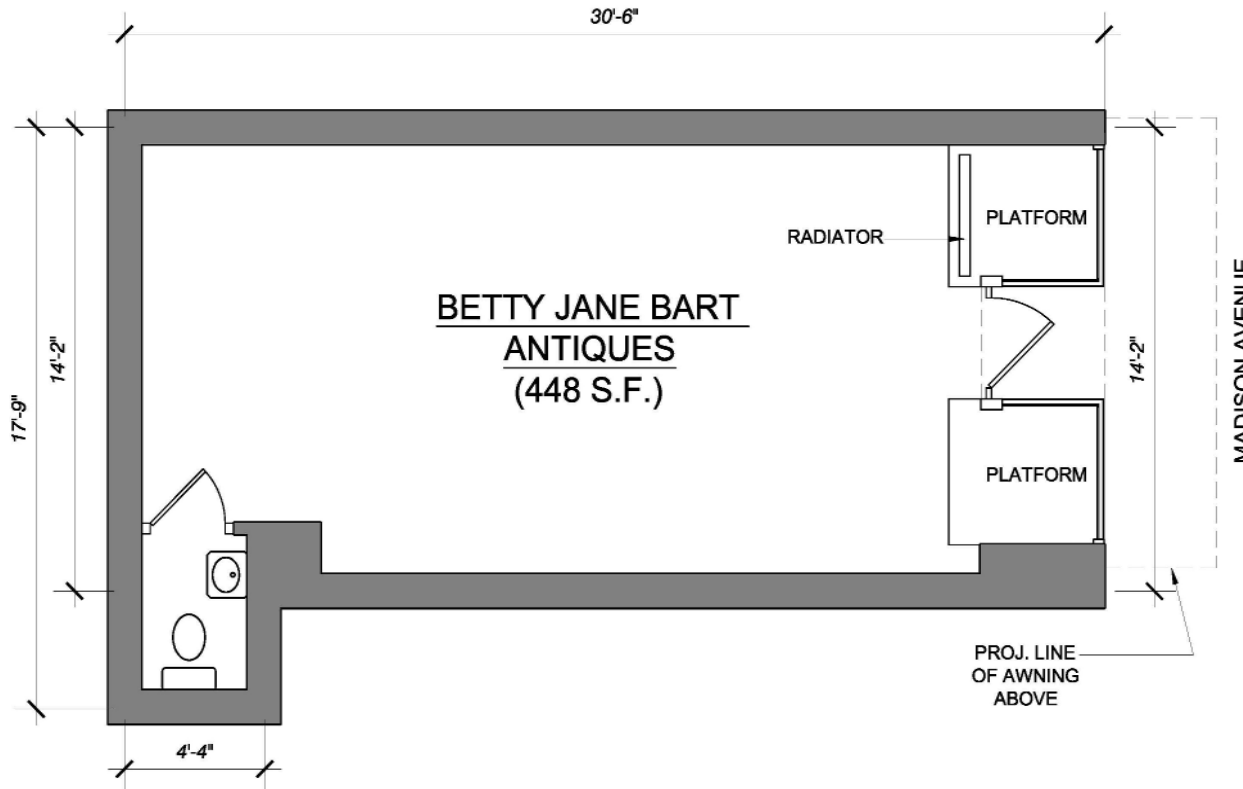
1225 MADISON AVENUE

UPPER EAST SIDE

BETWEEN 88TH & 89TH STREETS/EASTSIDE

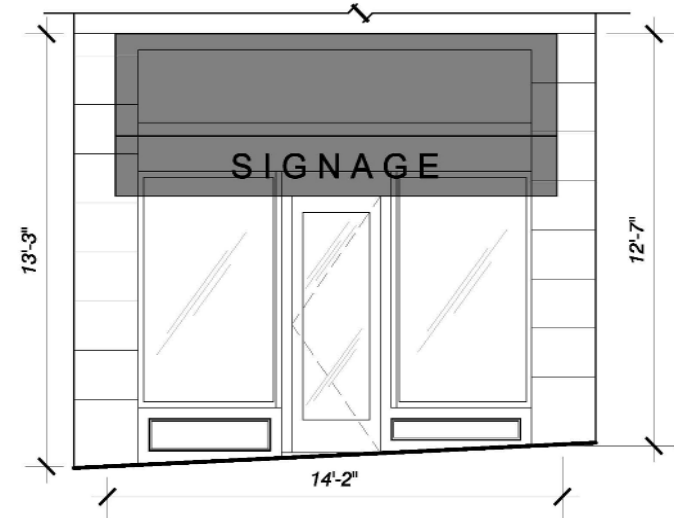
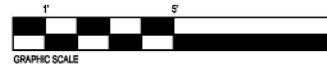
RETAIL SPACE AVAILABLE

APPROX. 448 SF- GROUND LEVEL



FLOOR PLAN

Scale: 1/4" = 1'-0"



ELEVATION

Scale: 1/4" = 1'-0"

AREAS

BETTY JANE BART ANTIQUES - 1225 MADISON AVENUE

TOTAL S.F. = 448 S.F. (GROSS)

EXCLUSIVE AGENTS:

FAITH HOPE CONSOLO

CHAIRMAN, THE RETAIL GROUP
fconsolo@elliman.com

JOSEPH AQUINO

EXECUTIVE VICE PRESIDENT
jaquino@elliman.com



Prudential
Douglas Elliman
Real Estate

575 MADISON AVENUE, THIRD FLOOR, NY 10022
TEL. 212. 418. 2020 FAX. 212. 418. 2005
WWW.ELLIMAN.COM WWW.FAITH-CONSOLO.COM