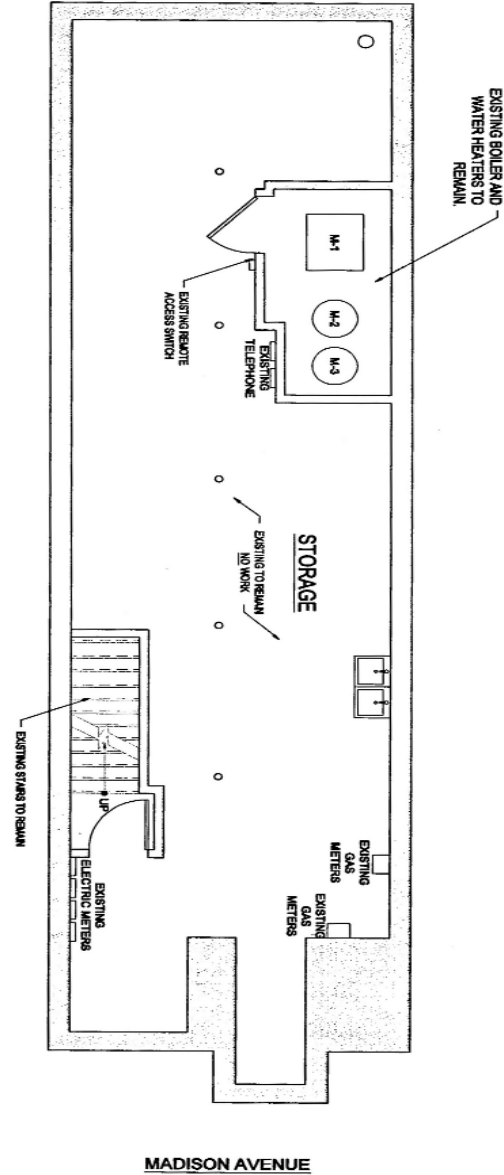
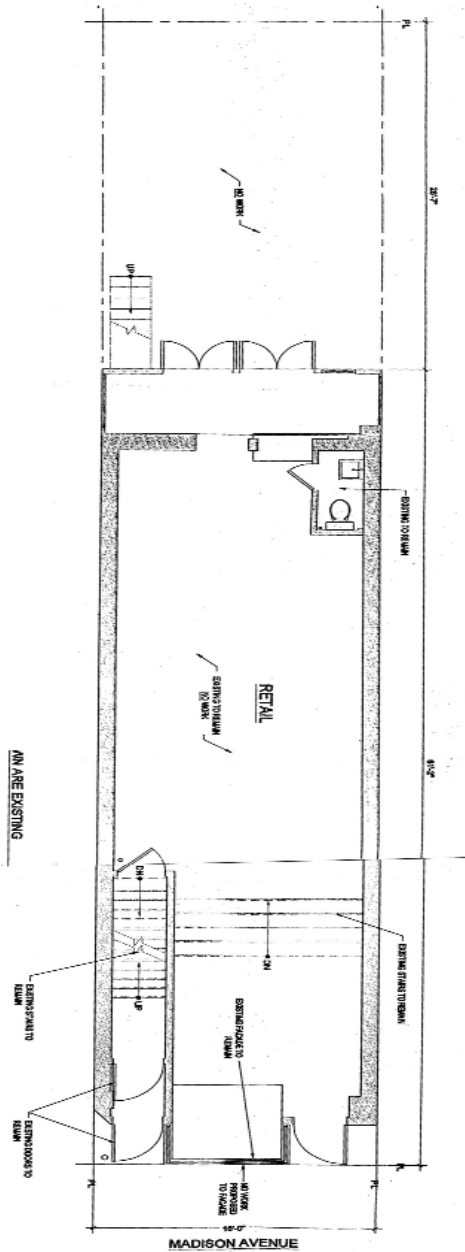


1318 MADISON AVENUE UPPER EAST SIDE

BETWEEN 93RD & 94TH STREETS / WESTSIDE

GROUND LEVEL: APPROX. 1,000 SF

BASEMENT: APPROX. 800 SF



EXCLUSIVE AGENTS:

FAITH HOPE CONSOLO

CHAIRMAN, THE RETAIL GROUP
fconsole@elliman.com

JOSEPH AQUINO

EXECUTIVE VICE PRESIDENT
jaquino@elliman.com



Prudential Douglas Elliman Real Estate

575 MADISON AVENUE, 3RD FLOOR, NY 10022

TEL. 212. 418. 2020 • FAX. 212. 418. 2005

WWW.FAITH-CONSOLO.COM

WWW.ELLIMAN.COM