

135 EAST 57TH STREET

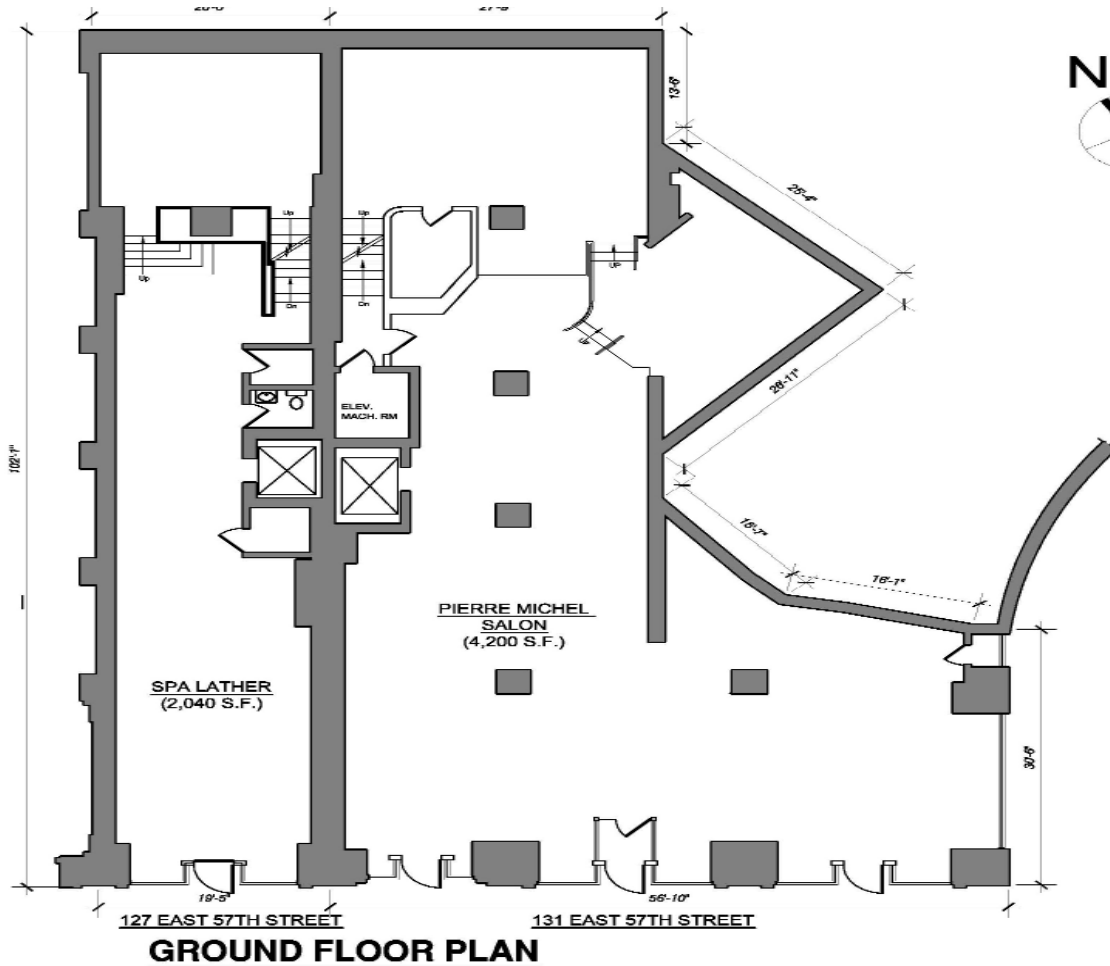
NORTHWEST CORNER OF LEXINGTON AVENUE

BLOOMIES COUNTRY

MULTI LEVEL BOUTIQUE

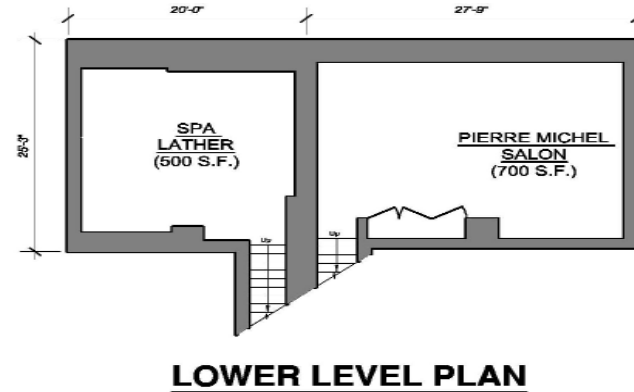
PRESENTLY: PIERRE MICHEL SALON

APPROX. 4,200 SF - GROUND LEVEL



LEXINGTON AVENUE

APPROX. 700 SF - LOWER LEVEL



AREAS
SPA LATHER - 127 EAST 57TH STREET
LOWER LEVEL - 500 S.F.
GROUND FLOOR LEVEL - 2,040 S.F.
SECOND LEVEL - 4,050 S.F.
TOTAL = 6,590 S.F.
PIERRE MICHEL SALON - 131 EAST 57TH STREET
LOWER LEVEL - 700 S.F.
GROUND FLOOR LEVEL - 4,200 S.F.
SECOND LEVEL - 3,340 S.F.
TOTAL = 8,240 S.F.



EXCLUSIVE AGENTS:

FAITH HOPE CONSOLO
CHAIRMAN, THE RETAIL GROUP
fconsole@elliman.com

JOSEPH AQUINO
EXECUTIVE VICE PRESIDENT
jaquino@elliman.com



575 MADISON AVENUE 3RD FLOOR
NEW YORK, NY 10022
TEL. 212. 418. 2020 FAX. 212. 418. 2005
WWW.ELLIMAN.COM
WWW.FAITH-CONSOLO.COM

© 2007, PRUDENTIAL FINANCIAL. PRUDENTIAL REAL ESTATE BROKERAGE SERVICES ARE OFFERED THROUGH THE INDEPENDENTLY OWNED AND OPERATED NETWORK OF BROKER MEMBER FRANCHISEES OF THE PRUDENTIAL REAL ESTATE AFFILIATES, INC., A PRUDENTIAL FINANCIAL COMPANY. PRUDENTIAL IS A REGISTERED TRADEMARK OF THE PRUDENTIAL INSURANCE COMPANY OF AMERICA. THE INFORMATION ABOVE HAS BEEN OBTAINED FROM SOURCE'S BELIEVED RELIABLE, WHILE WE DO NOT DOUBT ITS ACCURACY WE HAVE NOT VERIFIED IT AND MAKE NO GUARANTEE, WARRANTY OR REPRESENTATION ABOUT IT. IT IS YOUR RESPONSIBILITY TO INDEPENDENTLY CONFIRM ITS ACCURACY AND COMPLETENESS. ANY PROJECTIONS, OPINIONS, ASSUMPTIONS, OR ESTIMATES USED ARE FOR EXAMPLE ONLY AND DO NOT REPRESENT THE CURRENT OR FUTURE PERFORMANCE OF THE PROPERTY. THE VALUE OF THIS TRANSACTION TO YOU DEPENDS ON TAX AND OTHER FACTORS WHICH SHOULD BE EVALUATED BY YOUR TAX, FINANCIAL AND LEGAL ADVISORS. YOU AND YOUR ADVISORS SHOULD CONDUCT A CAREFUL, INDEPENDENT INVESTIGATION OF THE PROPERTY TO DETERMINE TO YOUR SATISFACTION THE SUITABILITY OF THE PROPERTY FOR YOUR NEEDS.

135 EAST 57TH STREET

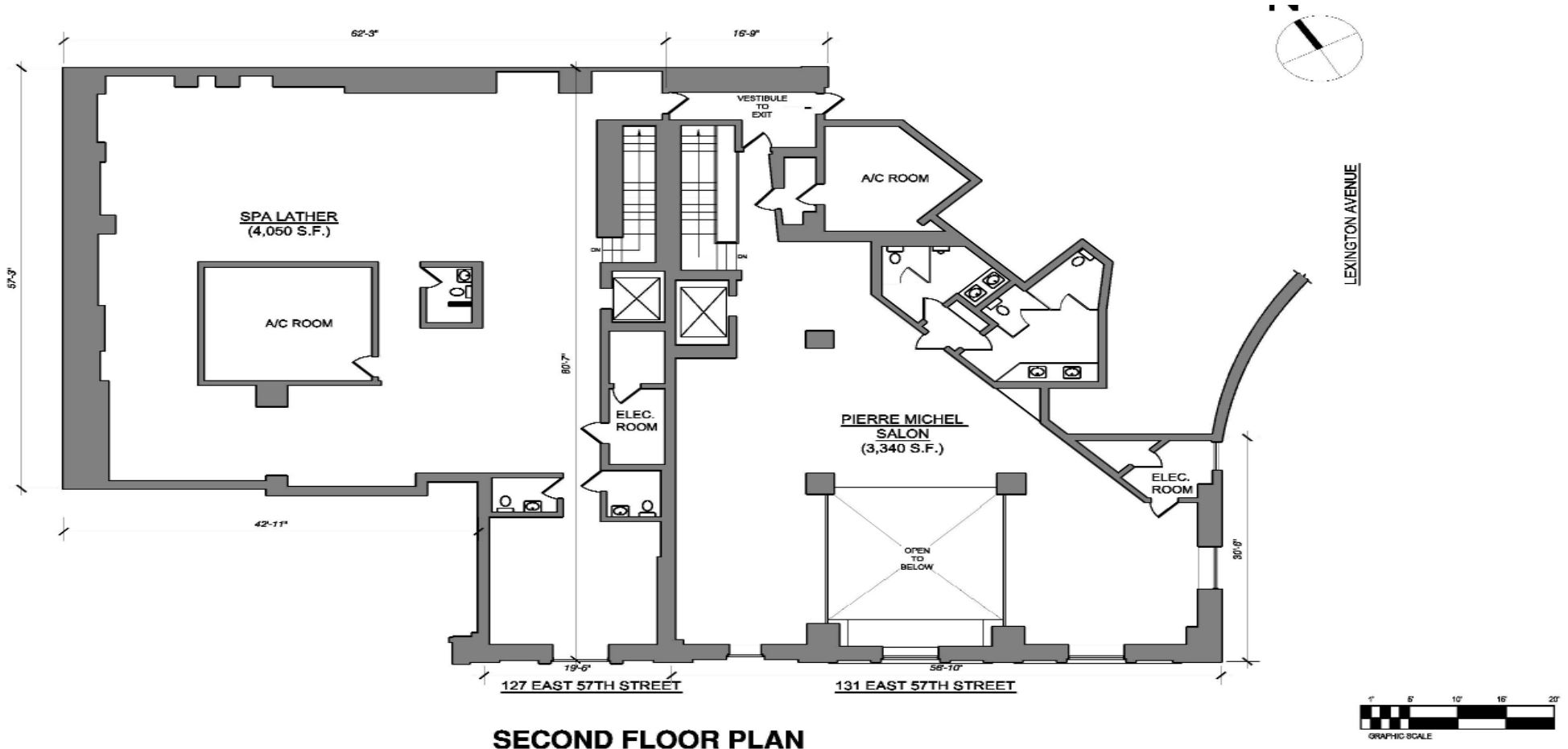
NORTHWEST CORNER OF LEXINGTON AVENUE

BLOOMIES COUNTRY

MULTI LEVEL BOUTIQUE

PRESENTLY: PIERRE MICHEL SALON

APPROX. 3,340 SF-SECOND LEVEL



SECOND FLOOR PLAN

EXCLUSIVE AGENTS:

FAITH HOPE CONSOLO
CHAIRMAN, THE RETAIL GROUP
fconsolo@elliman.com

JOSEPH AQUINO
EXECUTIVE VICE PRESIDENT
jaquino@elliman.com



575 MADISON AVENUE 3RD FLOOR
NEW YORK, NY 10022
TEL. 212. 418. 2020 FAX. 212. 418. 2005
WWW.ELLIMAN.COM
WWW.FAITH-CONSOLO.COM

© 2007, PRUDENTIAL FINANCIAL. PRUDENTIAL REAL ESTATE BROKERAGE SERVICES ARE OFFERED THROUGH THE INDEPENDENTLY OWNED AND OPERATED NETWORK OF BROKER MEMBER FRANCHISEES OF THE PRUDENTIAL REAL ESTATE AFFILIATES, INC., A PRUDENTIAL FINANCIAL COMPANY. PRUDENTIAL IS A REGISTERED TRADEMARK OF THE PRUDENTIAL INSURANCE COMPANY OF AMERICA. THE INFORMATION ABOVE HAS BEEN OBTAINED FROM SOURCES BELIEVED RELIABLE, WHILE WE DO NOT DOUBT ITS ACCURACY WE HAVE NOT VERIFIED IT AND MAKE NO GUARANTEE, WARRANTY OR REPRESENTATION ABOUT IT. IT IS YOUR RESPONSIBILITY TO INDEPENDENTLY CONFIRM ITS ACCURACY AND COMPLETENESS. ANY PROJECTIONS, OPINIONS, ASSUMPTIONS, OR ESTIMATES USED ARE FOR EXAMPLE ONLY AND DO NOT REPRESENT THE CURRENT OR FUTURE PERFORMANCE OF THE PROPERTY. THE VALUE OF THIS TRANSACTION TO YOU DEPENDS ON TAX AND OTHER FACTORS WHICH SHOULD BE EVALUATED BY YOUR TAX, FINANCIAL AND LEGAL ADVISORS. YOU AND YOUR ADVISORS SHOULD CONDUCT A CAREFUL, INDEPENDENT INVESTIGATION OF THE PROPERTY TO DETERMINE TO YOUR SATISFACTION THE SUITABILITY OF THE PROPERTY FOR YOUR NEEDS.