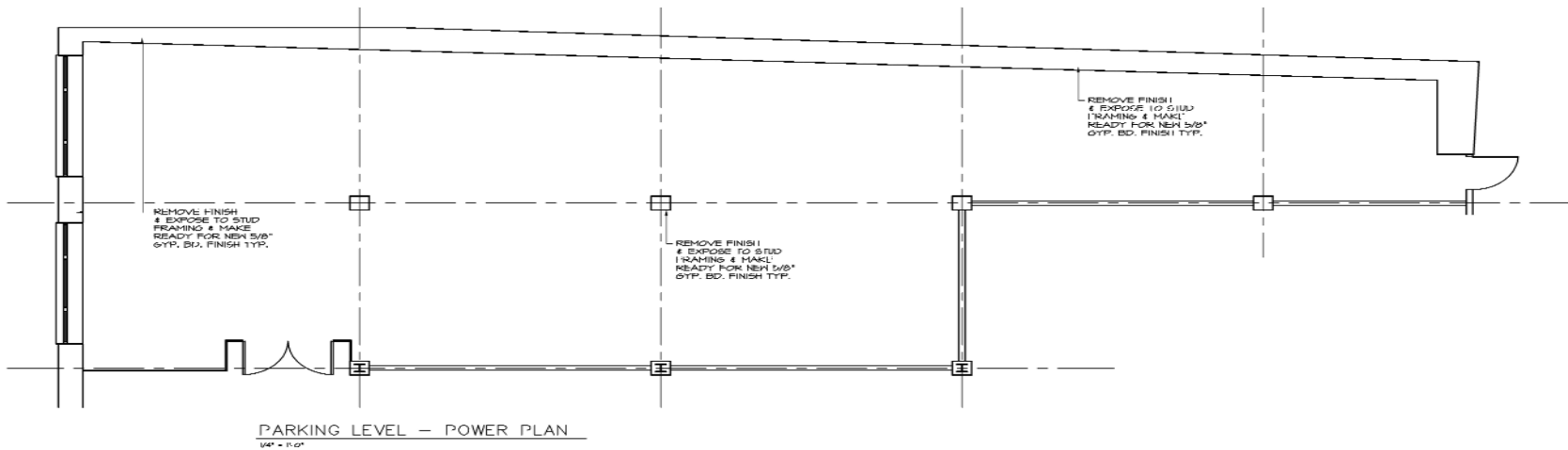
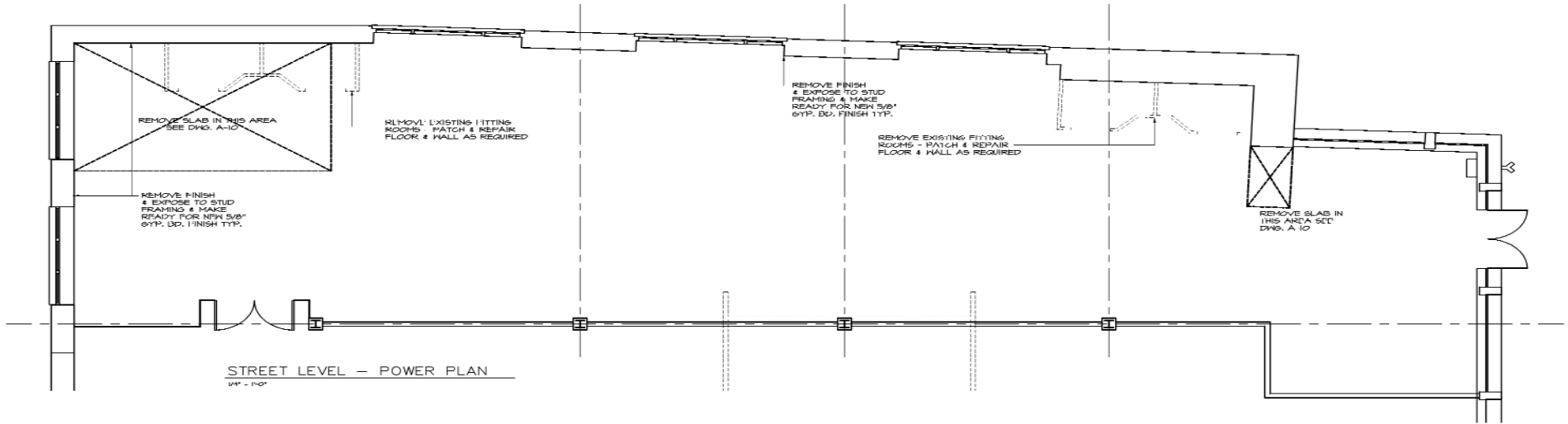


1468 NORTHERN BLVD.

MANHASSET

ON THE MIRACLE MILE IN MANHASSET

GROUND LEVEL - APPROX. 3,000 SF



EXCLUSIVE AGENTS:

FAITH HOPE CONSOLO

CHAIRMAN, THE RETAIL GROUP
fconsole@elliman.com

JOSEPH AQUINO

EXECUTIVE VICE PRESIDENT
jaquino@elliman.com



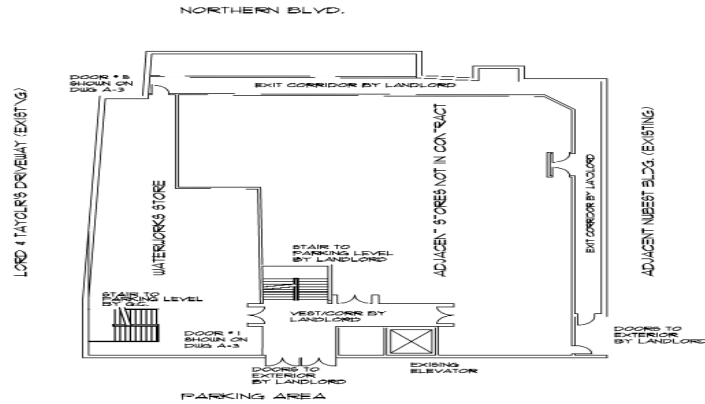
575 MADISON AVENUE 3RD FLOOR
 TEL. 212. 418. 2020 FAX. 212. 418. 2005
 WWW.ELLIMAN.COM
 WWW.FAITH-CONSOLO.COM

1468 NORTHERN BLVD.

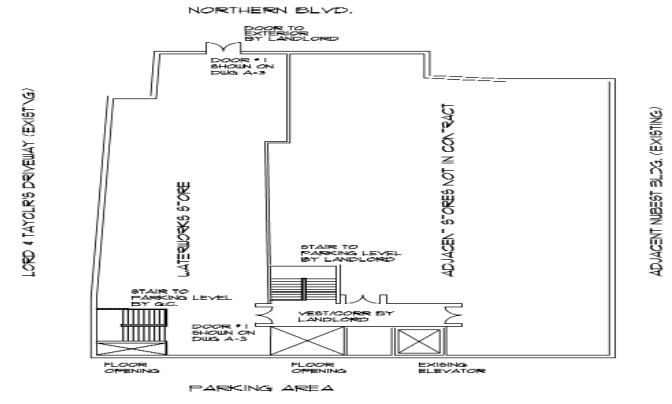
MANHASSET

ON THE MIRACLE MILE IN MANHASSET

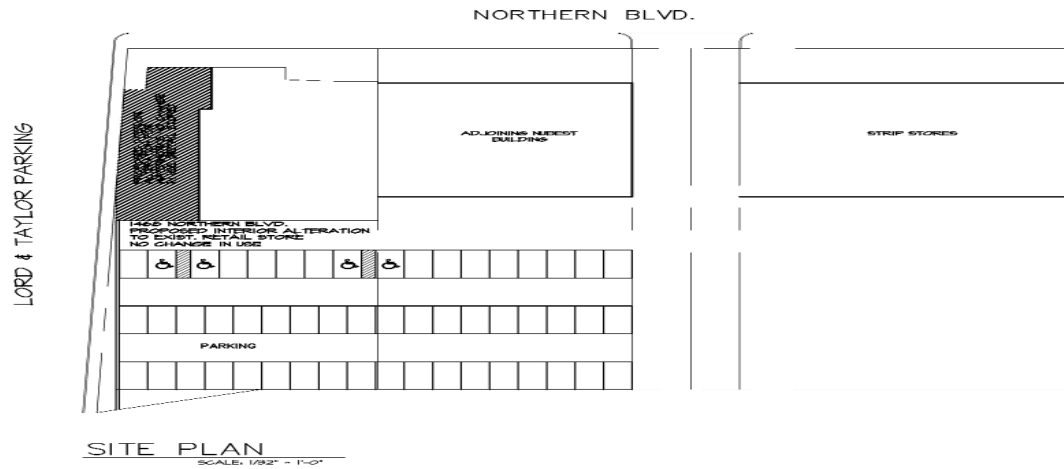
SELLING LOWER LEVEL - APPROX. 2,600 SF



PARKING LEVEL EXIT PLAN
SCALE: 1/8" = 1'-0"



FIRST FLOOR EXIT PLAN
SCALE: 1/8" = 1'-0"



EXCLUSIVE AGENTS:

FAITH HOPE CONSOLO
CHAIRMAN, THE RETAIL GROUP
fconsole@elliman.com

JOSEPH AQUINO
EXECUTIVE VICE PRESIDENT
jaquino@elliman.com



575 MADISON AVENUE 3RD FLOOR
TEL. 212. 418. 2020 FAX. 212. 418. 2005
WWW.ELLIMAN.COM
WWW.FAITH-CONSOLO.COM