

# 155 FIFTH AVENUE

# FLATIRON DISTRICT

BETWEEN 21ST & 22ND STRETS/EASTSIDE

FABULOUS RETAIL STORE

## ELEVATION



### EXCLUSIVE AGENTS:

**FAITH HOPE CONSOLO**

CHAIRMAN, THE RETAIL GROUP  
fconsole@elliman.com

**JOSEPH AQUINO**

EXECUTIVE VICE PRESIDENT  
jaquino@elliman.com



**Prudential**

Douglas Elliman  
Real Estate

575 MADISON AVENUE 3<sup>RD</sup> FLOOR  
TEL. 212. 418. 2020 FAX. 212. 418. 2005  
WWW.ELLIMAN.COM  
WWW.FAITH-CONSOLO.COM

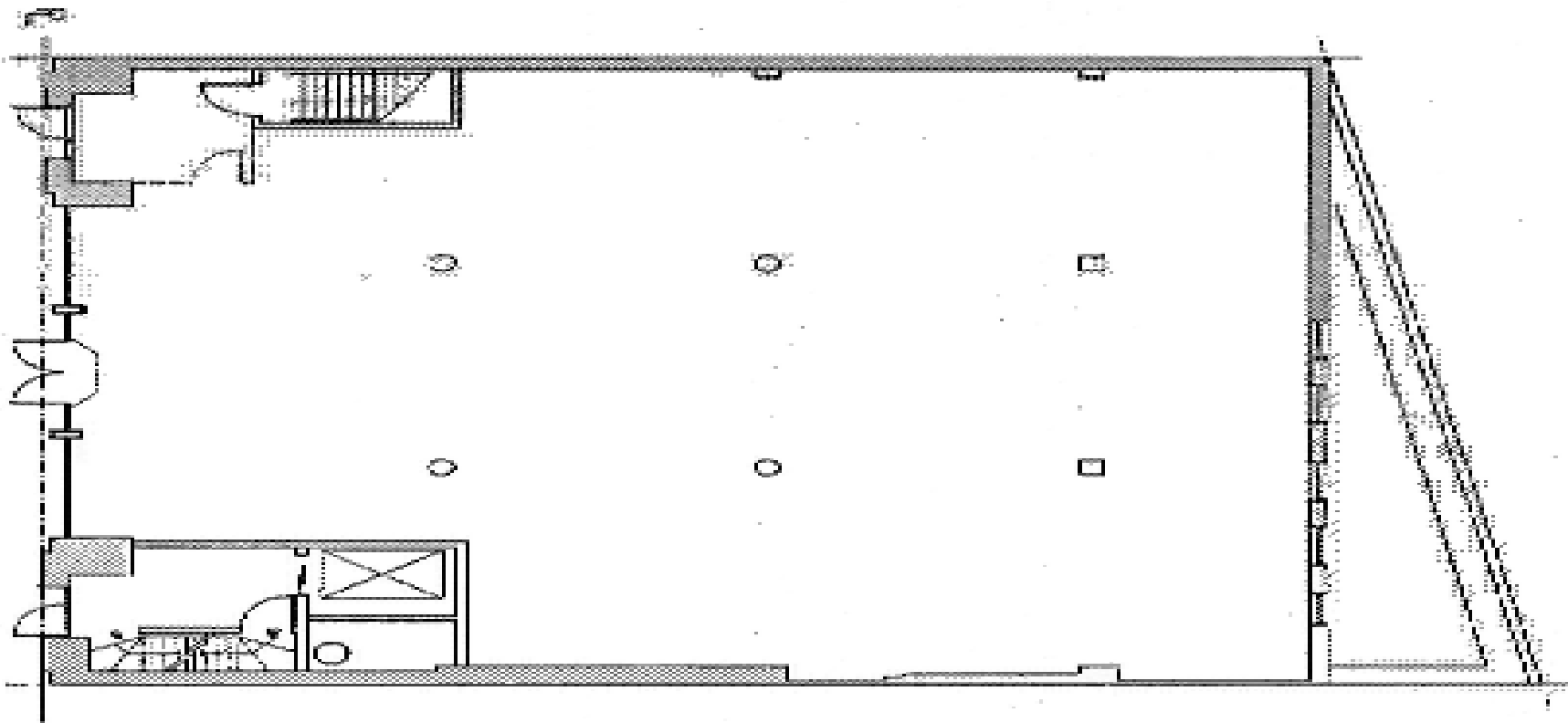
# 155 FIFTH AVENUE

BETWEEN 21ST & 22ND STREETS

# FLATIRON DISTRICT

FABULOUS RETAIL STORE

**GROUND LEVEL - APPROX. 4,500 SF**



**EXCLUSIVE AGENTS:**

**FAITH HOPE CONSOLO**

CHAIRMAN, THE RETAIL GROUP

fconsolo@elliman.com

**JOSEPH AQUINO**

EXECUTIVE VICE PRESIDENT

jaquino@elliman.com



**Prudential**

Douglas Elliman  
Real Estate

575 MADISON AVENUE 3<sup>RD</sup> FLOOR

TEL. 212. 418. 2020 FAX. 212. 418. 2005

WWW.ELLIMAN.COM

WWW.FAITH-CONSOLO.COM

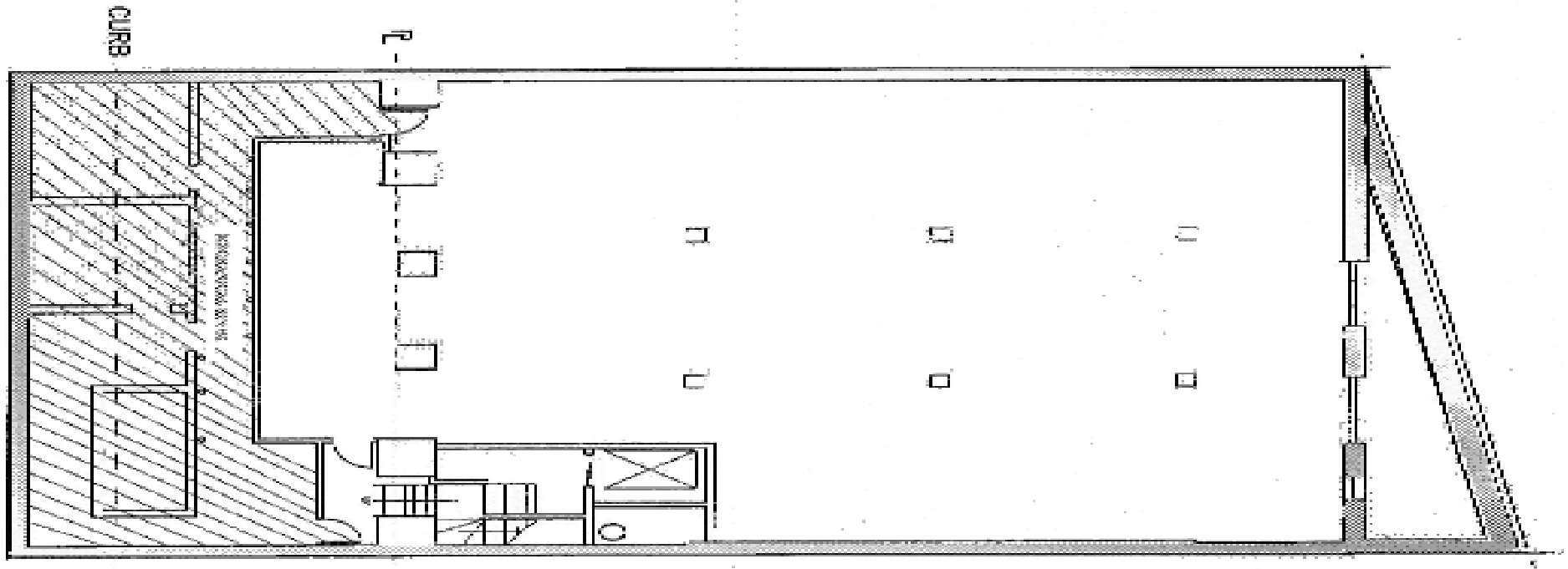
# 155 FIFTH AVENUE

# FLATIRON DISTRICT

BETWEEN 21ST & 22ND STREETS

FABULOUS RETAIL STORE

**LOWER LEVEL - APPROX. 4,800 SF**



**EXCLUSIVE AGENTS:**

**FAITH HOPE CONSOLO**

CHAIRMAN, THE RETAIL GROUP  
fconsole@elliman.com

**JOSEPH AQUINO**

EXECUTIVE VICE PRESIDENT  
jaquino@elliman.com



**Prudential**

Douglas Elliman  
Real Estate

575 MADISON AVENUE 3<sup>RD</sup> FLOOR  
TEL. 212. 418. 2020 FAX. 212. 418. 2005  
WWW.ELLIMAN.COM  
WWW.FAITH-CONSOLO.COM

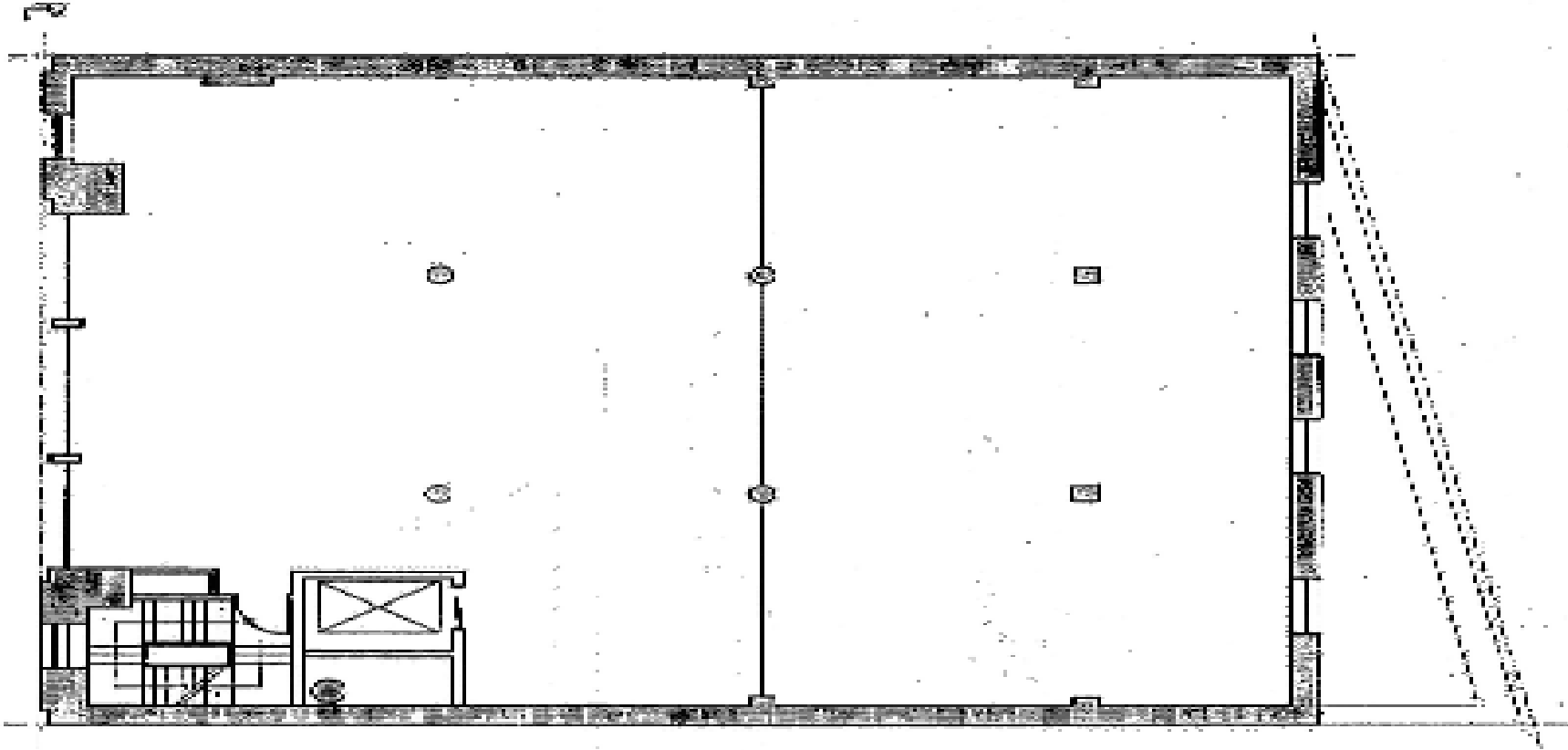
# 155 FIFTH AVENUE

BETWEEN 21ST & 22ND STREETS

# FLATIRON DISTRICT

FABULOUS RETAIL STORE

**MEZZANINE LEVEL - APPROX. 2,100 SF**



**EXCLUSIVE AGENTS:**

**FAITH HOPE CONSOLO**

CHAIRMAN, THE RETAIL GROUP  
fconsoleo@elliman.com

**JOSEPH AQUINO**

EXECUTIVE VICE PRESIDENT  
jaquino@elliman.com



**Prudential**

Douglas Elliman  
Real Estate

575 MADISON AVENUE 3<sup>RD</sup> FLOOR  
TEL. 212. 418. 2020 FAX. 212. 418. 2005  
WWW.ELLIMAN.COM  
WWW.FAITH-CONSOLO.COM