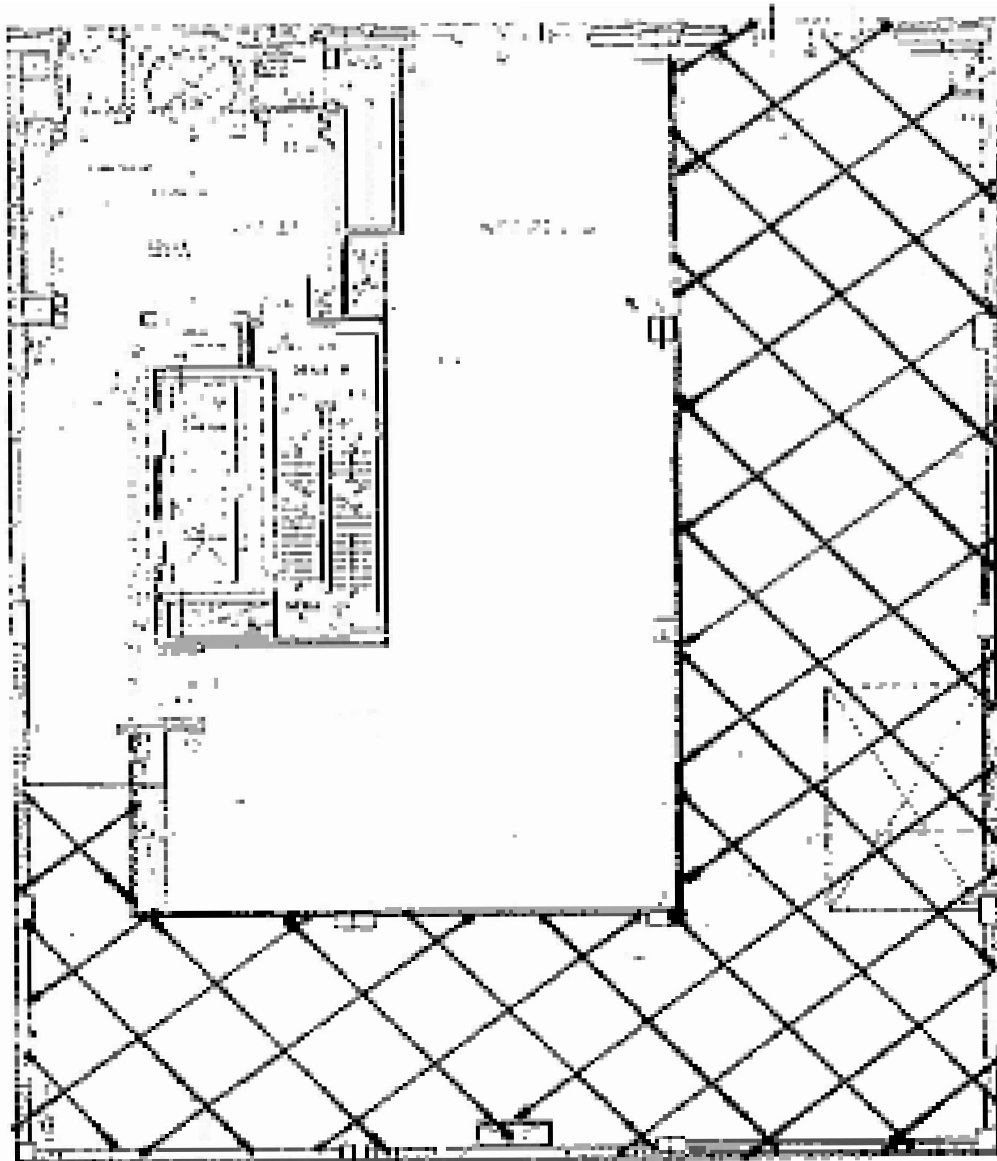


222 EAST 59TH STREET
BETWEEN 2ND & 3RD AVENUES

UPPER EAST SIDE
D & D BUILDING

PRESENTLY: ANDREW MARTIN

APPROX. 4,456 SF - GROUND LEVEL



EXCLUSIVE AGENTS:

FAITH HOPE CONSOLO

CHAIRMAN, THE RETAIL GROUP
fconsole@elliman.com

JOSEPH AQUINO

EXECUTIVE VICE PRESIDENT
jaquino@elliman.com



Prudential Douglas Elliman Real Estate

575 MADISON AVENUE, 3RD FLOOR
TEL. 212. 418. 2020 • FAX. 212. 418. 2005

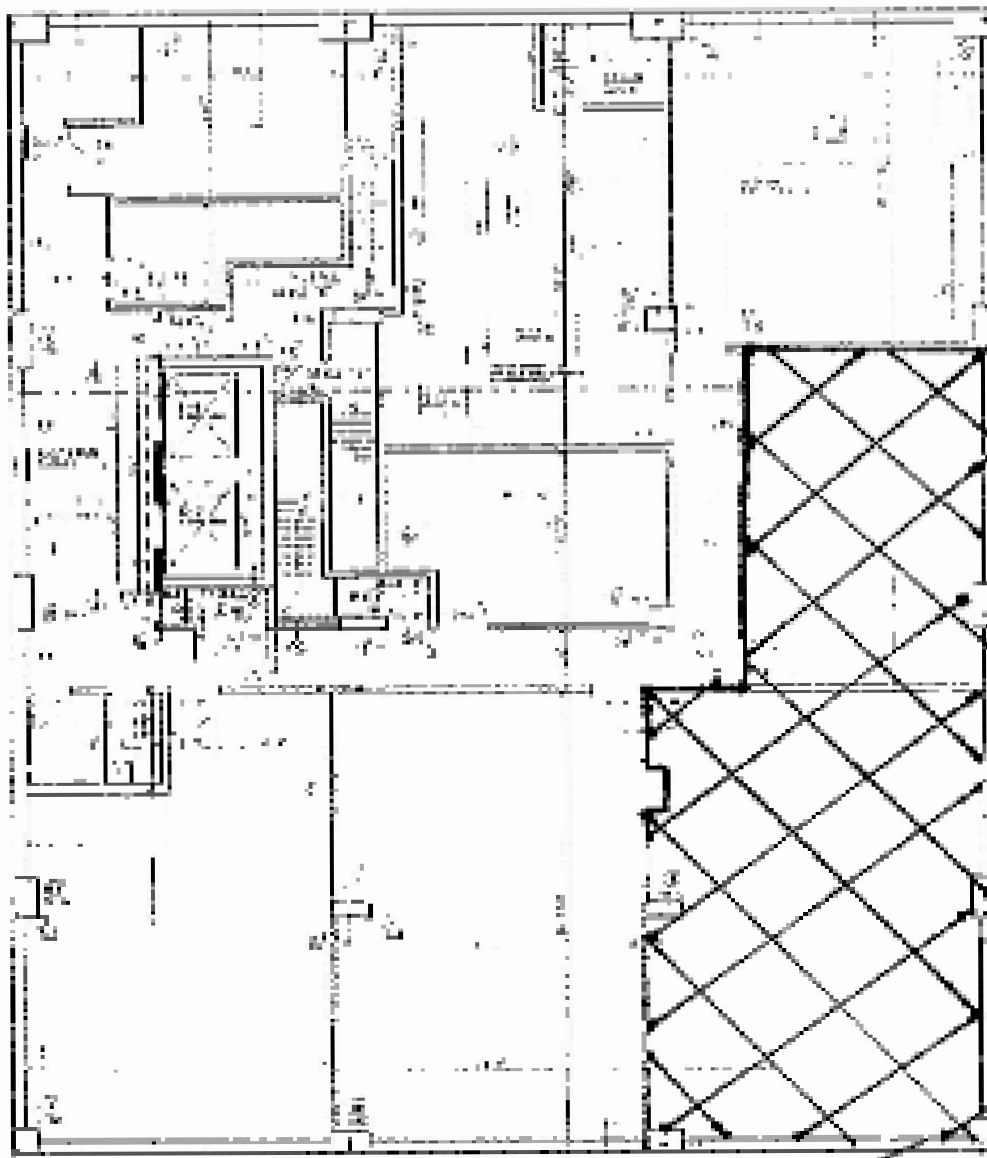
WWW.FAITH-CONSOLO.COM
WWW.ELLIMAN.COM

222 EAST 59TH STREET
BETWEEN 2ND & 3RD AVENUES

UPPER EAST SIDE
D & D BUILDING

PRESENTLY: ANDREW MARTIN

APPROX. 1,980 SF - SELLING BASEMENT



EXCLUSIVE AGENTS:

FAITH HOPE CONSOLO

CHAIRMAN, THE RETAIL GROUP
fconsole@elliman.com

JOSEPH AQUINO

EXECUTIVE VICE PRESIDENT
jaquino@elliman.com



Prudential Douglas Elliman Real Estate

575 MADISON AVENUE, 3RD FLOOR
TEL. 212. 418. 2020 • FAX. 212. 418. 2005

WWW.FAITH-CONSOLO.COM
WWW.ELLIMAN.COM