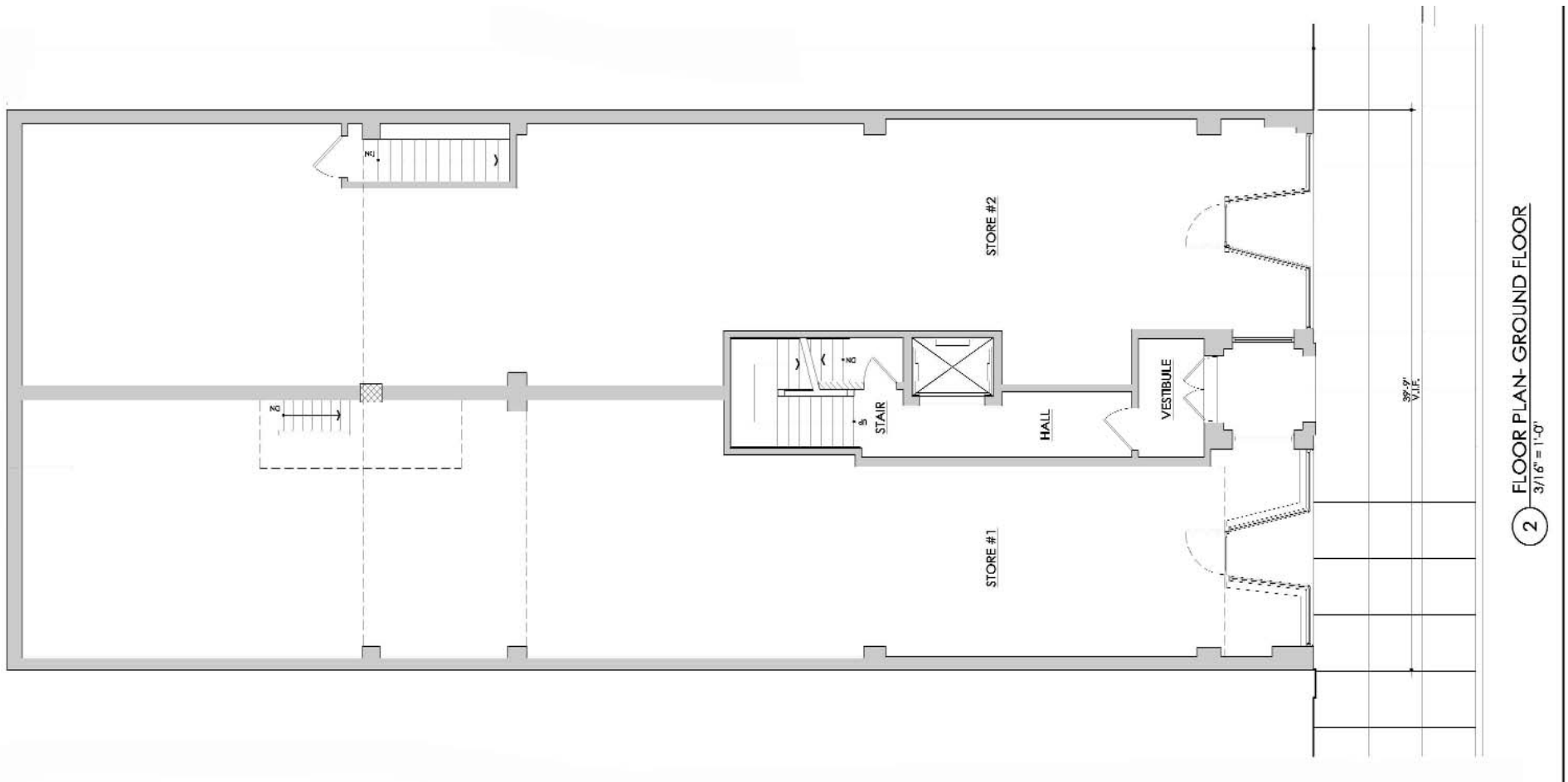


717 MADISON AVENUE

GOLD COAST

BETWEEN 63RD & 64TH STREET/NORTH EAST CORNER

GROUND LEVEL - APROX. 1,900 SF



EXCLUSIVE AGENTS:

FAITH HOPE CONSOLO

CHAIRMAN, THE RETAIL GROUP
fconsole@elliman.com

JOSEPH AQUINO

EXECUTIVE VICE PRESIDENT
jaquino@elliman.com



Prudential

Douglas Elliman
Real Estate

575 MADISON AVENUE 3RD FLOOR
TEL. 212. 418. 2020 FAX. 212. 418. 2005
WWW.ELLIMAN.COM
WWW.FAITH-CONSOLO.COM

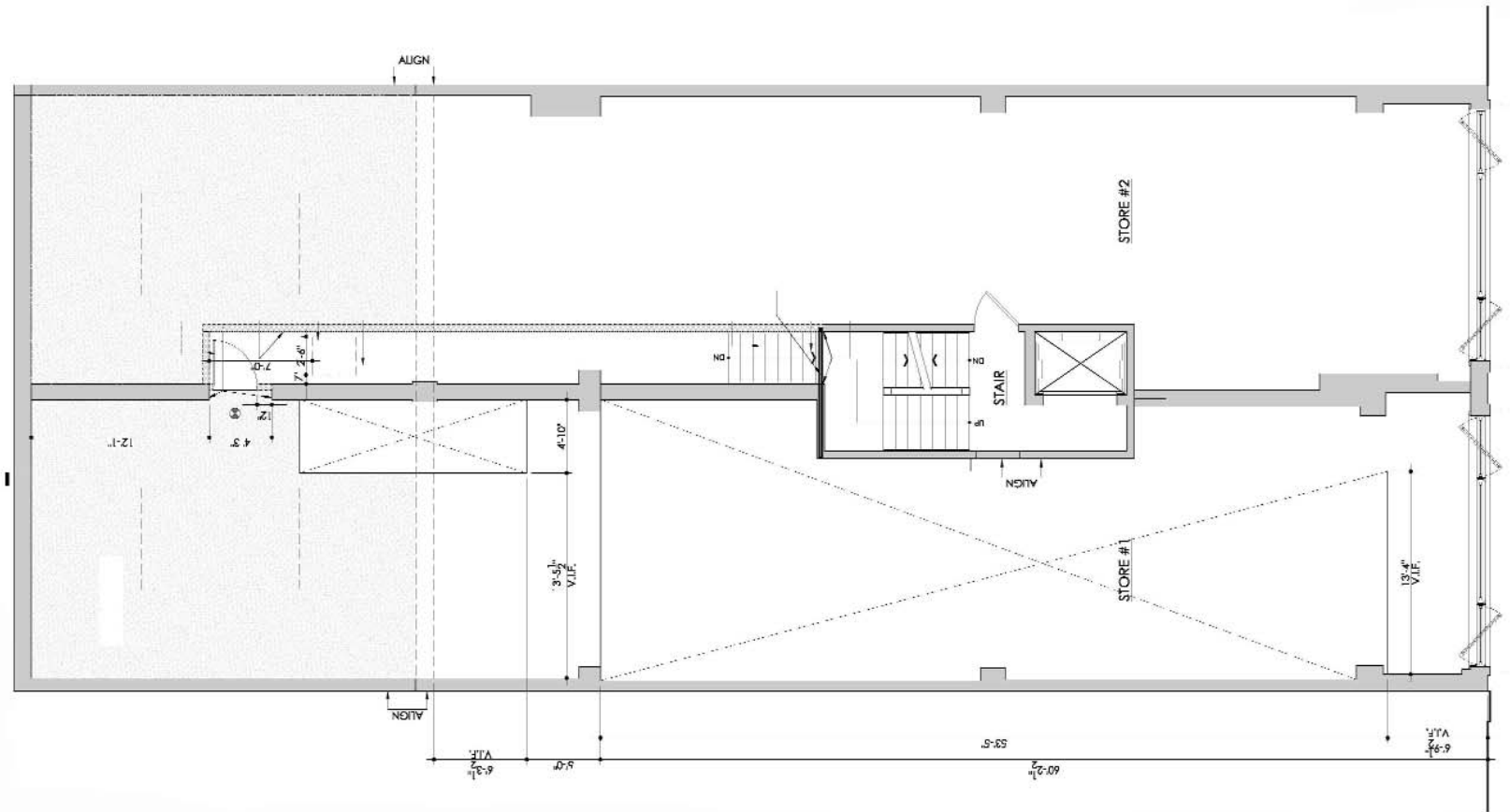
© 2007, PRUDENTIAL FINANCIAL. PRUDENTIAL REAL ESTATE BROKERAGE SERVICES ARE OFFERED THROUGH THE INDEPENDENTLY OWNED AND OPERATED NETWORK OF BROKER MEMBER FRANCHISEES OF THE PRUDENTIAL REAL ESTATE AFFILIATES, INC., A PRUDENTIAL FINANCIAL COMPANY. PRUDENTIAL IS A REGISTERED TRADEMARK OF THE PRUDENTIAL INSURANCE COMPANY OF AMERICA. THE INFORMATION ABOVE HAS BEEN OBTAINED FROM SOURCE'S BELIEVED RELIABLE, WHILE WE DO NOT DOUBT ITS ACCURACY WE HAVE NOT VERIFIED IT AND MAKE NO GUARANTEE, WARRANTY OR REPRESENTATION ABOUT IT. IT IS YOUR RESPONSIBILITY TO INDEPENDENTLY CONFIRM ITS ACCURACY AND COMPLETENESS. ANY PROJECTIONS, OPINIONS, ASSUMPTIONS, OR ESTIMATES USED ARE FOR EXAMPLE ONLY AND DO NOT REPRESENT THE CURRENT OR FUTURE PERFORMANCE OF THE PROPERTY. THE VALUE OF THIS TRANSACTION TO YOU DEPENDS ON TAX AND OTHER FACTORS WHICH SHOULD BE EVALUATED BY YOUR TAX, FINANCIAL AND LEGAL ADVISORS. YOU AND YOUR ADVISORS SHOULD CONDUCT A CAREFUL, INDEPENDENT INVESTIGATION OF THE PROPERTY TO DETERMINE TO YOUR SATISFACTION THE SUITABILITY OF THE PROPERTY FOR YOUR NEEDS.

717 MADISON AVENUE

GOLD COAST

BETWEEN 63RD & 64TH STREET/NORTH EAST CORNER

SECOND LEVEL - APPROX. 1,695 SF



3 FLOOR PLAN - SECOND FLOOR
3/16" = 1'-0"

EXCLUSIVE AGENTS:

FAITH HOPE CONSOLO

CHAIRMAN, THE RETAIL GROUP
fconsole@elliman.com

JOSEPH AQUINO

EXECUTIVE VICE PRESIDENT
jaquino@elliman.com



Prudential

Douglas Elliman
Real Estate

575 MADISON AVENUE 3RD FLOOR
TEL. 212. 418. 2020 FAX. 212. 418. 2005
WWW.ELLIMAN.COM
WWW.FAITH-CONSOLO.COM

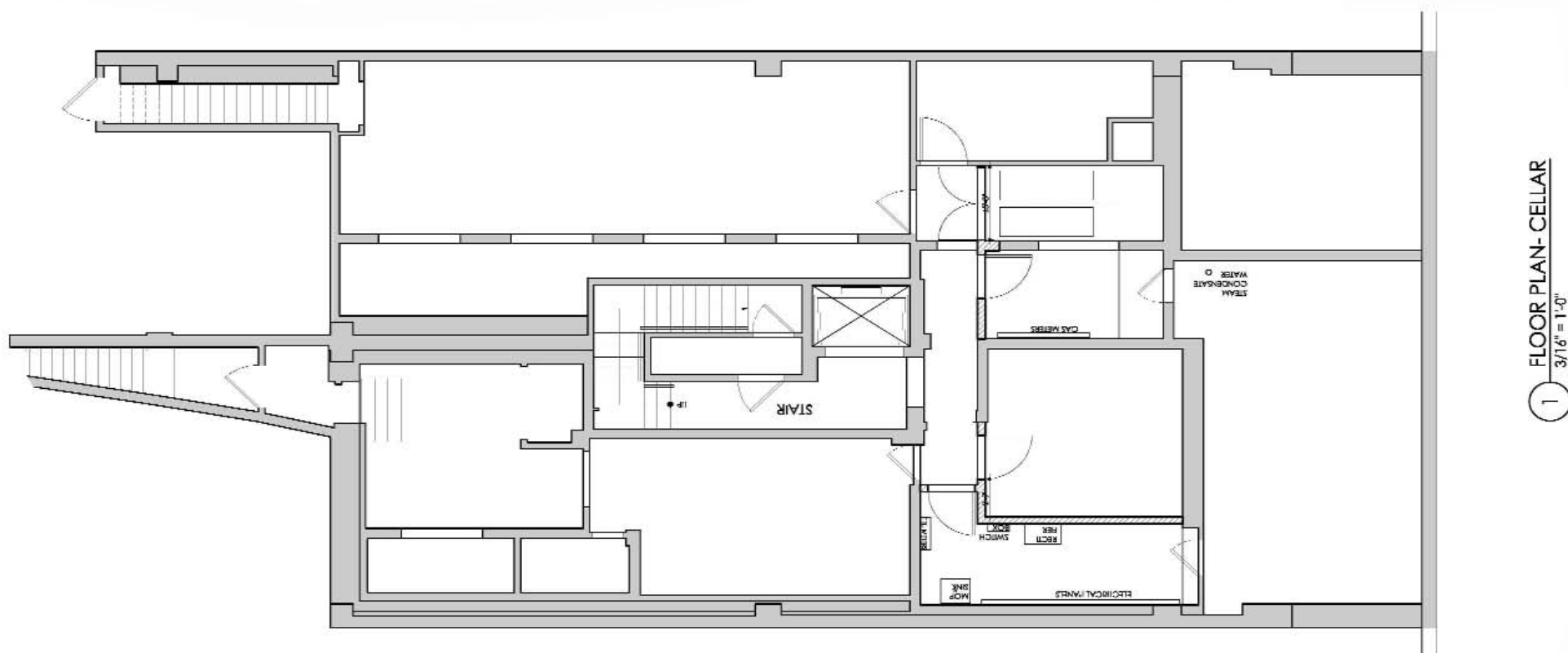
© 2007, PRUDENTIAL FINANCIAL. PRUDENTIAL REAL ESTATE BROKERAGE SERVICES ARE OFFERED THROUGH THE INDEPENDENTLY OWNED AND OPERATED NETWORK OF BROKER MEMBER FRANCHISEES OF THE PRUDENTIAL REAL ESTATE AFFILIATES, INC., A PRUDENTIAL FINANCIAL COMPANY. PRUDENTIAL IS A REGISTERED TRADEMARK OF THE PRUDENTIAL INSURANCE COMPANY OF AMERICA. THE INFORMATION ABOVE HAS BEEN OBTAINED FROM SOURCE'S BELIEVED RELIABLE, WHILE WE DO NOT DOUBT ITS ACCURACY WE HAVE NOT VERIFIED IT AND MAKE NO GUARANTEE, WARRANTY OR REPRESENTATION ABOUT IT. IT IS YOUR RESPONSIBILITY TO INDEPENDENTLY CONFIRM ITS ACCURACY AND COMPLETENESS. ANY PROJECTIONS, OPINIONS, ASSUMPTIONS, OR ESTIMATES USED ARE FOR EXAMPLE ONLY AND DO NOT REPRESENT THE CURRENT OR FUTURE PERFORMANCE OF THE PROPERTY. THE VALUE OF THIS TRANSACTION TO YOU DEPENDS ON TAX AND OTHER FACTORS WHICH SHOULD BE EVALUATED BY YOUR TAX, FINANCIAL AND LEGAL ADVISORS. YOU AND YOUR ADVISORS SHOULD CONDUCT A CAREFUL, INDEPENDENT INVESTIGATION OF THE PROPERTY TO DETERMINE TO YOUR SATISFACTION THE SUITABILITY OF THE PROPERTY FOR YOUR NEEDS.

717 MADISON AVENUE

GOLD COAST

BETWEEN 63RD & 64TH STREET/NORTH EAST CORNER

BASEMENT LEVEL - APPROX. 600 SF



EXCLUSIVE AGENTS:

FAITH HOPE CONSOLO

CHAIRMAN, THE RETAIL GROUP
fconsole@elliman.com

JOSEPH AQUINO

EXECUTIVE VICE PRESIDENT
jaquino@elliman.com



Prudential
Douglas Elliman
Real Estate

575 MADISON AVENUE 3RD FLOOR
TEL. 212. 418. 2020 FAX. 212. 418. 2005
WWW.ELLIMAN.COM
WWW.FAITH-CONSOLO.COM