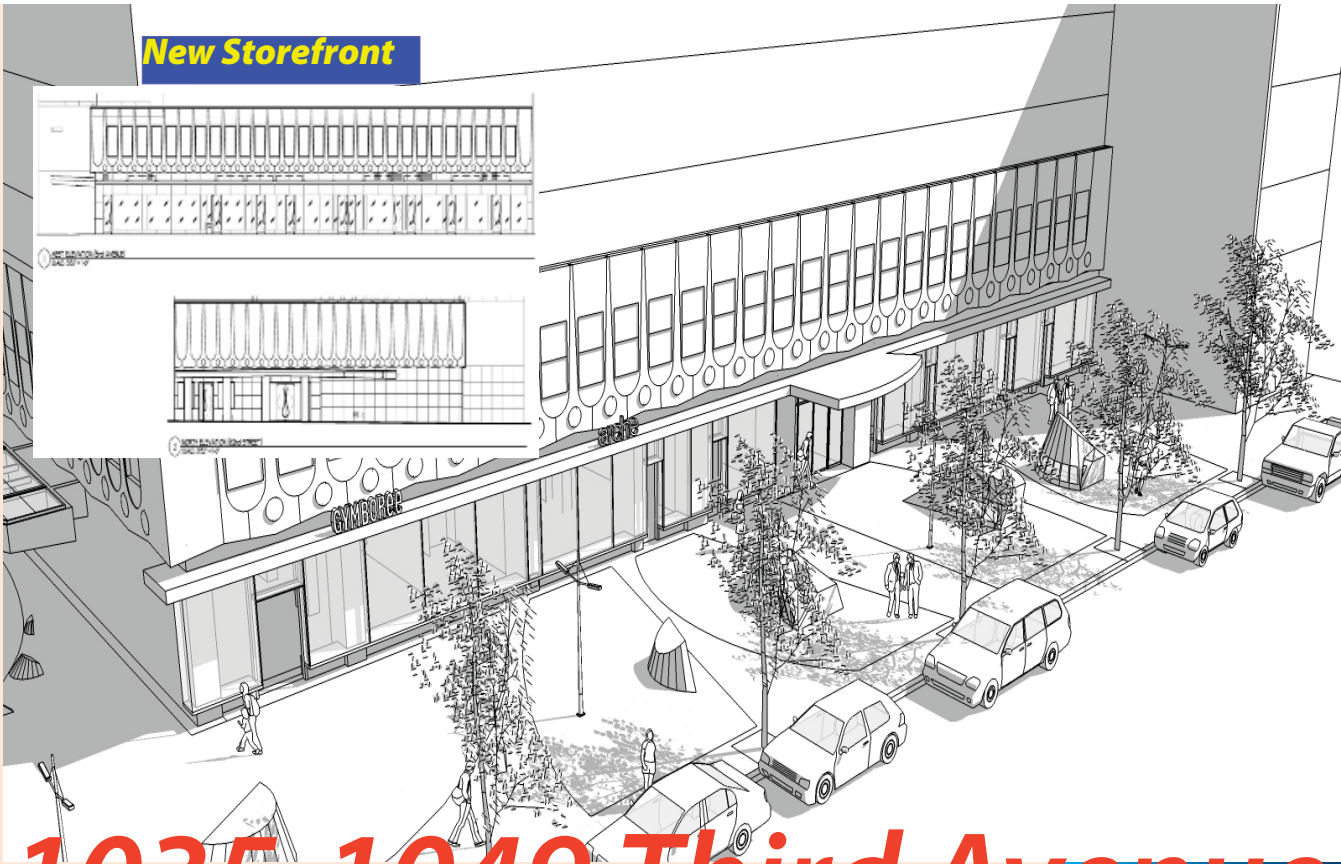


**New Storefront**



# 1035-1049 Third Avenue

Between 61st & 62nd Streets - Upper East Side

## Neighboring Retailers



### Retail Space Available

1049 Gymboree - Approx. 1,462 SF  
(Corner of East 62nd Street)

1039 Variazioni - Approx. 538 SF

### Shown Exclusively Through:

Faith Hope Consolo  
Chairman, The Retail Group  
T. 212.418.2000  
fconsolo@elliman.com

Joseph Aquino  
Executive Vice President  
T. 212.418.2018  
jaquino@elliman.com

Retail Leasing and Sales Division  
575 Madison Avenue, 3rd Floor  
New York, NY 10022  
[www.faith-consolo.com](http://www.faith-consolo.com)  
[www.elliman.com](http://www.elliman.com)



Prudential Douglas Elliman Real Estate