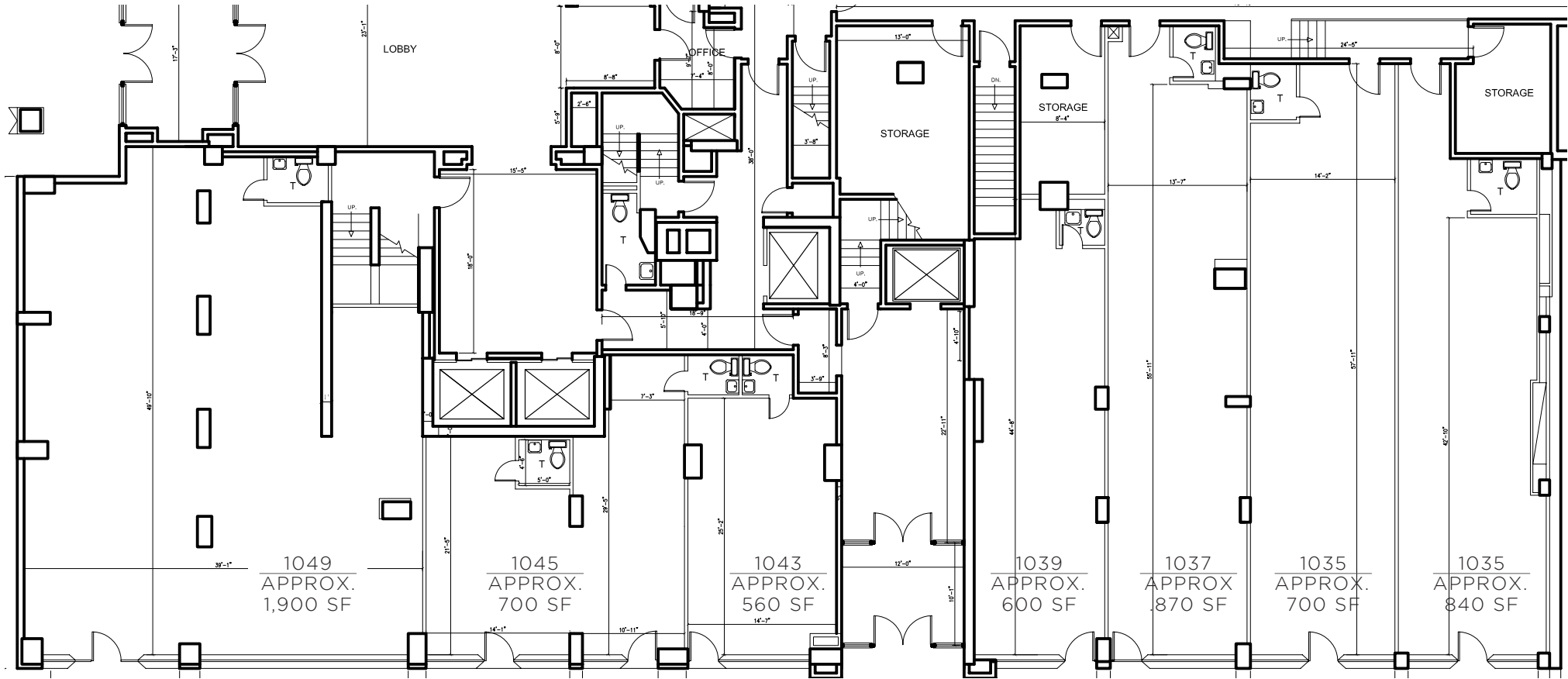


1035-1049 THIRD AVENUE UPPER EAST SIDE

BETWEEN 61ST & 62ND STREETS / EASTSIDE



1049 GYMOREE (AVAILABLE)	APPROX. 1,900 SF	1039 WEDDING THINGS	APPROX. 600 SF	1035 MORRELL	APPROX. 700 SF
1045 ARCHE	APPROX. 700 SF	1037 NAIL NIOBE	APPROX. 870 SF	1035 CAFE BACIO (AVAILABLE)	APPROX. 840 SF
1043 BRELLA BAR	APPROX. 560 SF				

EXCLUSIVE AGENTS:

FAITH HOPE CONSOLO
CHAIRMAN, THE RETAIL GROUP
fconsole@elliman.com

JOSEPH AQUINO
EXECUTIVE VICE PRESIDENT
jaquino@elliman.com



575 MADISON AVENUE 3RD FLOOR
TEL. 212. 418. 2020 FAX. 212. 418. 2005
WWW.ELLIMAN.COM
WWW.FAITH-CONSOLO.COM

© 2007. PRUDENTIAL FINANCIAL. PRUDENTIAL REAL ESTATE BROKERAGE SERVICES ARE OFFERED THROUGH THE INDEPENDENTLY OWNED AND OPERATED NETWORK OF BROKER MEMBER FRANCHISEES OF THE PRUDENTIAL REAL ESTATE AFFILIATES, INC., A PRUDENTIAL FINANCIAL COMPANY. PRUDENTIAL IS A REGISTERED TRADEMARK OF THE PRUDENTIAL INSURANCE COMPANY OF AMERICA. THE INFORMATION ABOVE HAS BEEN OBTAINED FROM SOURCE'S BELIEVED RELIABLE, WHILE WE DO NOT DOUBT ITS ACCURACY WE HAVE NOT VERIFIED IT AND MAKE NO GUARANTEE, WARRANTY OR REPRESENTATION ABOUT IT. IT IS YOUR RESPONSIBILITY TO INDEPENDENTLY CONFIRM ITS ACCURACY AND COMPLETENESS. ANY PROJECTIONS, OPINIONS, ASSUMPTIONS, OR ESTIMATES USED ARE FOR EXAMPLE ONLY AND DO NOT REPRESENT THE CURRENT OR FUTURE PERFORMANCE OF THE PROPERTY. THE VALUE OF THIS TRANSACTION TO YOU DEPENDS ON TAX AND OTHER FACTORS WHICH SHOULD BE EVALUATED BY YOUR TAX, FINANCIAL AND LEGAL ADVISORS. YOU AND YOUR ADVISORS SHOULD CONDUCT A CAREFUL, INDEPENDENT INVESTIGATION OF THE PROPERTY TO DETERMINE TO YOUR SATISFACTION THE SUITABILITY OF THE PROPERTY FOR YOUR NEEDS.