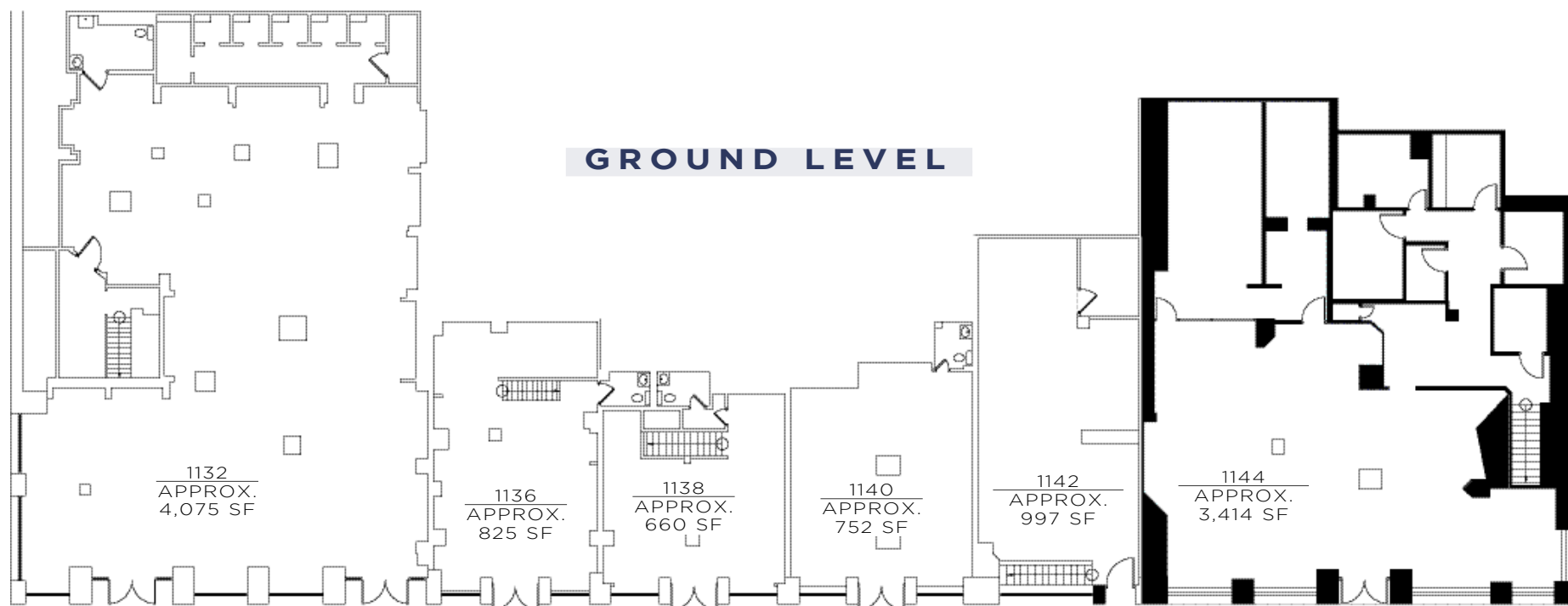


# 1132-1144 THIRD AVENUE UPPER EAST SIDE

## BLOCKFRONT 66<sup>TH</sup> AND 67<sup>TH</sup> STREETS / WESTSIDE



**GROUND LEVEL**

1132	ARDEN B	APRX.	<b>4,075 SF</b>
1136	CANYON BEACHWARE	APRX.	<b>825 SF</b>
1138	DIAB'LESS	APRX.	<b>660 SF</b>

1140	BARE ESSENTUALS	APRX.	<b>752 SF</b>
1142-44	SEARLE	APRX.	<b>4,411 SF</b>

**EXCLUSIVE AGENTS:**

**FAITH HOPE CONSOLO**  
CHAIRMAN, THE RETAIL GROUP  
fconsole@elliman.com

**JOSEPH AQUINO**  
EXECUTIVE VICE PRESIDENT  
jaquino@elliman.com



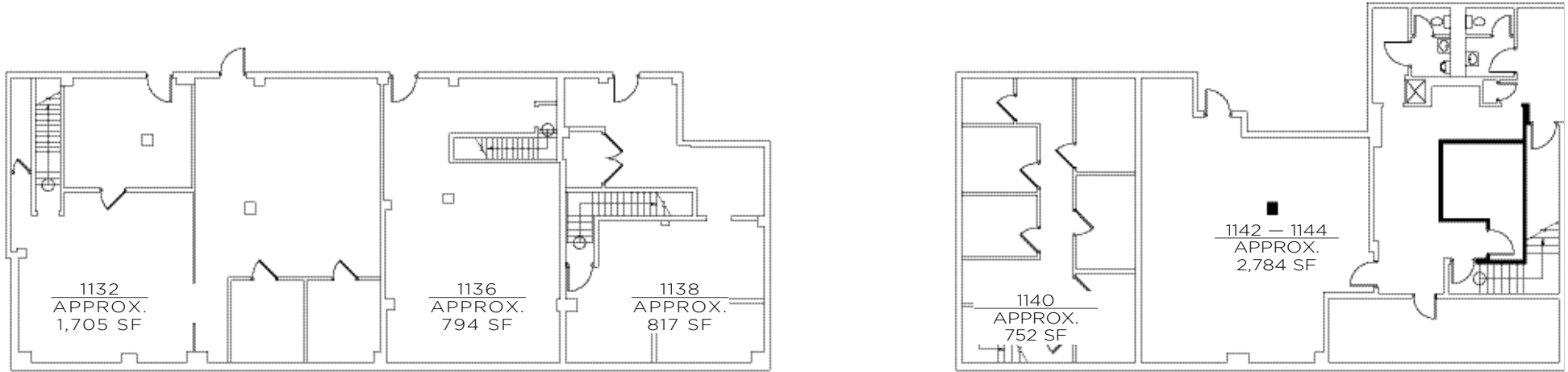
575 MADISON AVENUE 3<sup>RD</sup> FLOOR  
TEL. 212. 418. 2020 FAX. 212. 418. 2005  
WWW.ELLIMAN.COM  
WWW.FAITH-CONSOLO.COM

© 2007, PRUDENTIAL FINANCIAL. PRUDENTIAL REAL ESTATE BROKERAGE SERVICES ARE OFFERED THROUGH THE INDEPENDENTLY OWNED AND OPERATED NETWORK OF BROKER MEMBER FRANCHISEES OF THE PRUDENTIAL REAL ESTATE AFFILIATES, INC., A PRUDENTIAL FINANCIAL COMPANY. PRUDENTIAL IS A REGISTERED TRADEMARK OF THE PRUDENTIAL INSURANCE COMPANY OF AMERICA. THE INFORMATION ABOVE HAS BEEN OBTAINED FROM SOURCES BELIEVED RELIABLE. WHILE WE DO NOT DOUBT ITS ACCURACY WE HAVE NOT VERIFIED IT, AND MAKE NO GUARANTEE, WARRANTY OR REPRESENTATION ABOUT IT. IT IS YOUR RESPONSIBILITY TO INDEPENDENTLY CONFIRM ITS ACCURACY AND COMPLETENESS. ANY PROJECTIONS, OPINIONS, ASSUMPTIONS, OR ESTIMATES USED ARE FOR EXAMPLE ONLY AND DO NOT REPRESENT THE CURRENT OR FUTURE PERFORMANCE OF THE PROPERTY. THE VALUE OF THIS TRANSACTION TO YOU DEPENDS ON TAX AND OTHER FACTORS WHICH SHOULD BE EVALUATED BY YOUR TAX, FINANCIAL AND LEGAL ADVISORS. YOU AND YOUR ADVISORS SHOULD CONDUCT A CAREFUL, INDEPENDENT INVESTIGATION OF THE PROPERTY TO DETERMINE TO YOUR SATISFACTION THE SUITABILITY OF THE PROPERTY FOR YOUR NEEDS.

# 1132-1144 THIRD AVENUE UPPER EAST SIDE

## BLOCKFRONT 66<sup>TH</sup> AND 67<sup>TH</sup> STREETS / WESTSIDE

### BASEMENT LEVEL



1132	ARDEN B	APRX.	<b>1,705 SF</b>
1136	CANYON BEACHWARE	APRX.	<b>794 SF</b>
1138	DAIB'LESS	APRX.	<b>817 SF</b>

1140	BARE ESCENTUALS	APRX.	<b>752 SF</b>
1142-44	SEARLE	APRX.	<b>2,784 SF</b>

#### EXCLUSIVE AGENTS:

**FAITH HOPE CONSOLO**  
CHAIRMAN, THE RETAIL GROUP  
fconsole@elliman.com

**JOSEPH AQUINO**  
EXECUTIVE VICE PRESIDENT  
jaquino@elliman.com



575 MADISON AVENUE 3<sup>RD</sup> FLOOR  
TEL. 212. 418. 2020 FAX. 212. 418. 2005  
WWW.ELLIMAN.COM  
WWW.FAITH-CONSOLO.COM

© 2007, PRUDENTIAL FINANCIAL. PRUDENTIAL REAL ESTATE BROKERAGE SERVICES ARE OFFERED THROUGH THE INDEPENDENTLY OWNED AND OPERATED NETWORK OF BROKER MEMBER FRANCHISEES OF THE PRUDENTIAL REAL ESTATE AFFILIATES, INC., A PRUDENTIAL FINANCIAL COMPANY. PRUDENTIAL IS A REGISTERED TRADEMARK OF THE PRUDENTIAL INSURANCE COMPANY OF AMERICA. THE INFORMATION ABOVE HAS BEEN OBTAINED FROM SOURCES BELIEVED RELIABLE. WHILE WE DO NOT DOUBT ITS ACCURACY WE HAVE NOT VERIFIED IT AND MAKE NO GUARANTEE, WARRANTY OR REPRESENTATION ABOUT IT. IT IS YOUR RESPONSIBILITY TO INDEPENDENTLY CONFIRM ITS ACCURACY AND COMPLETENESS. ANY PROJECTIONS, OPINIONS, ASSUMPTIONS, OR ESTIMATES USED ARE FOR EXAMPLE ONLY AND DO NOT REPRESENT THE CURRENT OR FUTURE PERFORMANCE OF THE PROPERTY. THE VALUE OF THIS TRANSACTION TO YOU DEPENDS ON TAX AND OTHER FACTORS WHICH SHOULD BE EVALUATED BY YOUR TAX, FINANCIAL AND LEGAL ADVISORS. YOU AND YOUR ADVISORS SHOULD CONDUCT A CAREFUL, INDEPENDENT INVESTIGATION OF THE PROPERTY TO DETERMINE TO YOUR SATISFACTION THE SUITABILITY OF THE PROPERTY FOR YOUR NEEDS.