

1318 MADISON AVENUE

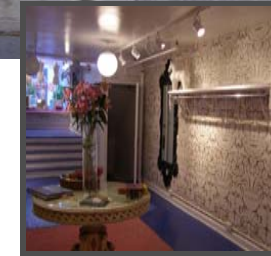
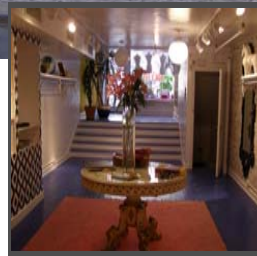
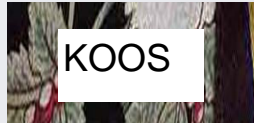
UPPER EAST SIDE

BETWEEN 93RD & 94TH STREETS/WESTSIDE

RETAIL SPACE AVAILABLE

MADISON AVENUE-UPPER EAST SIDE

NEIGHBORING RETAILERS:



PREVIOUSLY: TRACY FEITH

DESCRIPTION: APPROX. 1,000 SF - GROUND FLOOR
APPROX. 800 SF - BASEMENT LEVEL
INCLUDES GARDEN

FRONTAGE: 16 LINEAR FEET

EXCLUSIVE AGENTS:

FAITH HOPE CONSOLO

CHAIRMAN, THE RETAIL GROUP
fconsole@elliman.com

JOSEPH AQUINO

EXECUTIVE VICE PRESIDENT
jaquino@elliman.com



Prudential
Douglas Elliman
Real Estate

575 MADISON AVENUE, 3RD FLOOR, NY 10022

TEL. 212. 418. 2020 FAX. 212. 418. 2005

WWW.ELLIMAN.COM WWW.FAITH-CONSOLO.COM