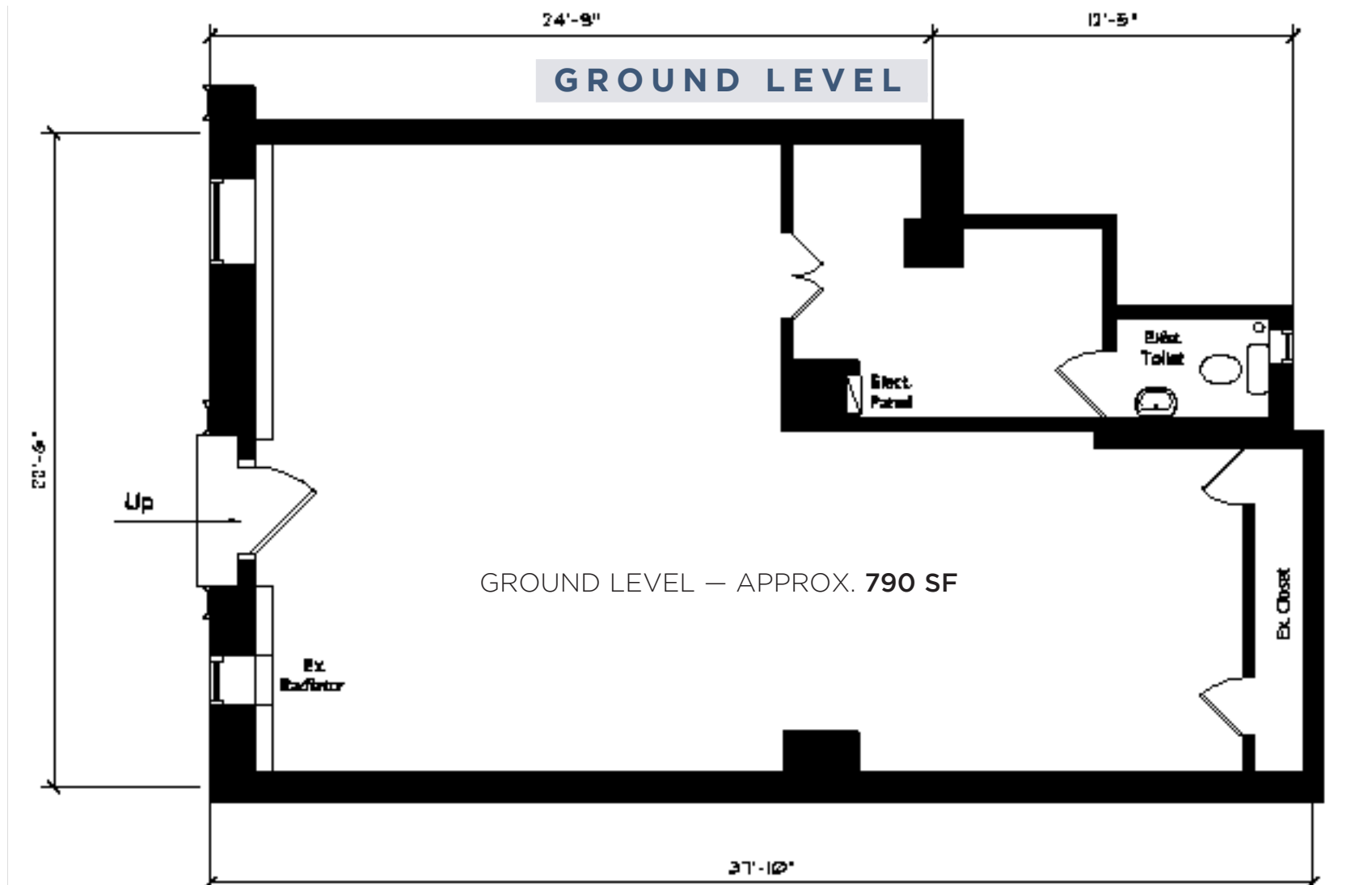


# 31 EAST 72<sup>ND</sup> STREET

# GOLD COAST

## BETWEEN MADISON AVENUE AND PARK AVENUE / NORTHSIDE



### EXCLUSIVE AGENTS:

**FAITH HOPE CONSOLO**

CHAIRMAN, THE RETAIL GROUP  
fconsole@elliman.com

**JOSEPH AQUINO**

EXECUTIVE VICE PRESIDENT  
jaquino@elliman.com

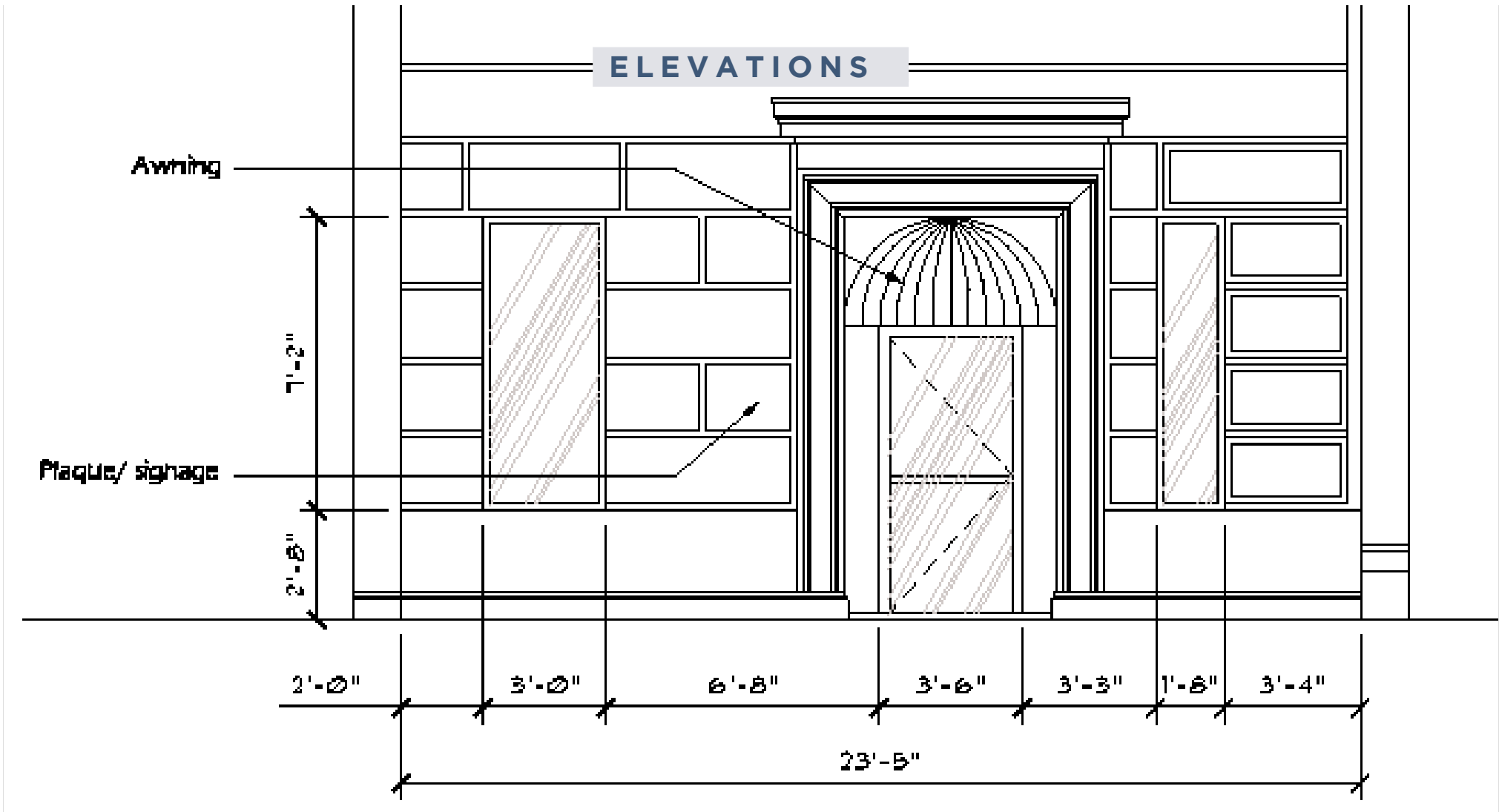


575 MADISON AVENUE 3<sup>RD</sup> FLOOR  
TEL. 212. 418. 2020 FAX. 212. 418. 2005  
WWW.ELLIMAN.COM  
WWW.FAITH-CONSOLO.COM

# 31 EAST 72<sup>ND</sup> STREET

# GOLD COAST

## BETWEEN MADISON AVENUE AND PARK AVENUE / NORTHSIDE



### EXCLUSIVE AGENTS:

**FAITH HOPE CONSOLO**

CHAIRMAN, THE RETAIL GROUP  
fconsole@elliman.com

**JOSEPH AQUINO**

EXECUTIVE VICE PRESIDENT  
jaquino@elliman.com



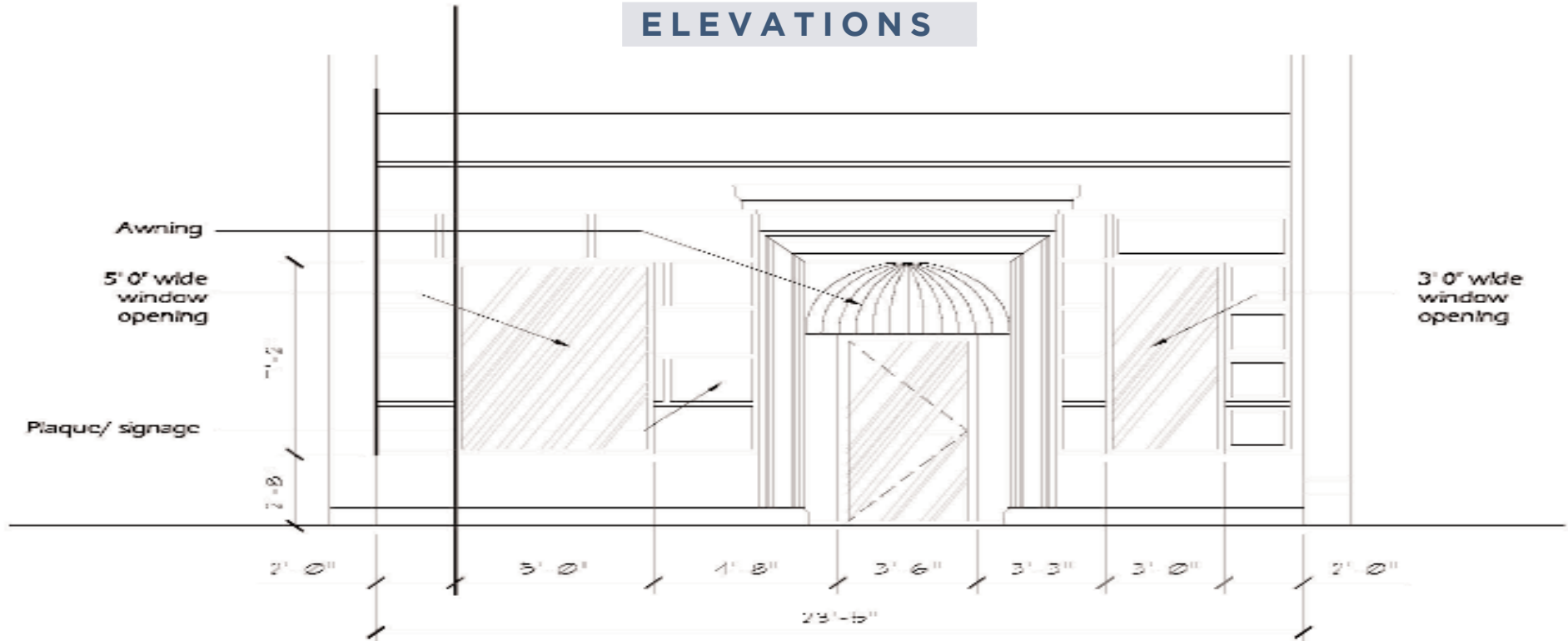
575 MADISON AVENUE 3<sup>RD</sup> FLOOR  
TEL. 212. 418. 2020 FAX. 212. 418. 2005  
WWW.ELLIMAN.COM  
WWW.FAITH-CONSOLO.COM

# 31 EAST 72<sup>ND</sup> STREET

BETWEEN MADISON AVENUE AND PARK AVENUE / NORTHSIDE

# GOLD COAST

## ELEVATIONS



**Prudential Douglas Elliman Real Estate**  
 FAITH HOPE CONSOLO - JOSEPH A. AQUINO  
 Exclusive Agents  
 tel: 212.418.2020 fax: 212.418.2020  
 fconsole@elliman.com jaquino@elliman.com  
 http://www.faith-consolo.com

Project Title:  
 31 East 72nd St.  
 New York, NY  
 Proposed Storefront Elevation

Sheet No:  
**DD-1.1**  
 Scale: 1/4" = 1'-0"  
 Date: 10/1/07

**globalarch**  
 DESIGN & CONSULTING  
 150 Park Avenue, 21st Floor, New York, NY 10017  
 Tel: 212.691.6100 Fax: 212.691.6101

### EXCLUSIVE AGENTS:

**FAITH HOPE CONSOLO**  
 CHAIRMAN, THE RETAIL GROUP  
 fconsole@elliman.com

**JOSEPH AQUINO**  
 EXECUTIVE VICE PRESIDENT  
 jaquino@elliman.com



575 MADISON AVENUE 3<sup>RD</sup> FLOOR  
 TEL. 212. 418. 2020 FAX. 212. 418. 2005  
 WWW.ELLIMAN.COM  
 WWW.FAITH-CONSOLO.COM

© 2007, PRUDENTIAL FINANCIAL. PRUDENTIAL REAL ESTATE BROKERAGE SERVICES ARE OFFERED THROUGH THE INDEPENDENTLY OWNED AND OPERATED NETWORK OF BROKER MEMBER FRANCHISEES OF THE PRUDENTIAL REAL ESTATE AFFILIATES, INC., A PRUDENTIAL FINANCIAL COMPANY. PRUDENTIAL IS A REGISTERED TRADEMARK OF THE PRUDENTIAL INSURANCE COMPANY OF AMERICA. THE INFORMATION ABOVE HAS BEEN OBTAINED FROM SOURCES BELIEVED RELIABLE, WHILE WE DO NOT DOUBT ITS ACCURACY WE HAVE NOT VERIFIED IT AND MAKE NO GUARANTEE, WARRANTY OR REPRESENTATION ABOUT IT. IT IS YOUR RESPONSIBILITY TO INDEPENDENTLY CONFIRM ITS ACCURACY AND COMPLETENESS. ANY PROJECTIONS, OPINIONS, ASSUMPTIONS, OR ESTIMATES USED ARE FOR EXAMPLE ONLY AND DO NOT REPRESENT THE CURRENT OR FUTURE PERFORMANCE OF THE PROPERTY. THE VALUE OF THIS TRANSACTION TO YOU DEPENDS ON TAX AND OTHER FACTORS WHICH SHOULD BE EVALUATED BY YOUR TAX, FINANCIAL AND LEGAL ADVISORS. YOU AND YOUR ADVISORS SHOULD CONDUCT A CAREFUL, INDEPENDENT INVESTIGATION OF THE PROPERTY TO DETERMINE TO YOUR SATISFACTION THE SUITABILITY OF THE PROPERTY FOR YOUR NEEDS.