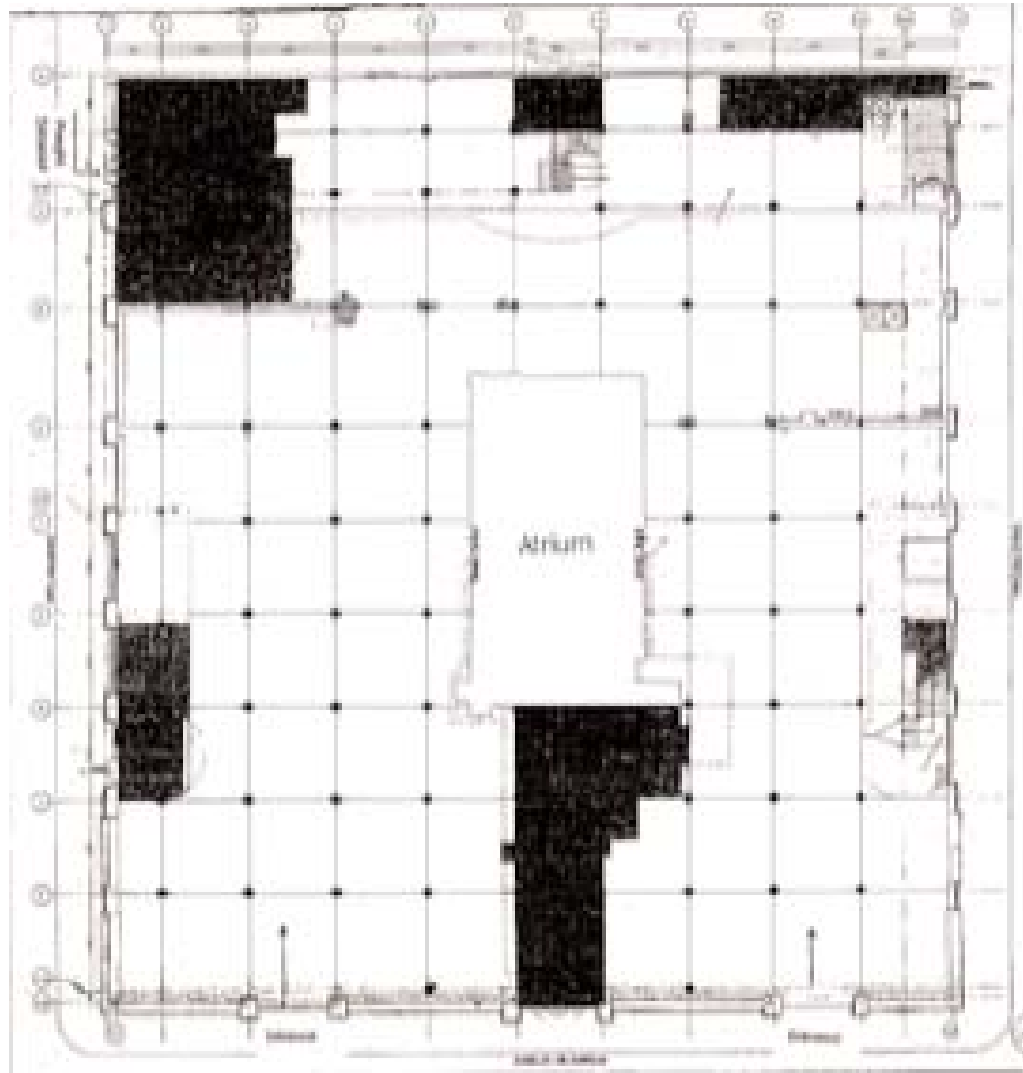


# 675 SIXTH AVENUE

BETWEEN 21ST & 22ND STREETS



21st  
Street.

22nd  
Street

Sixth Avenue

**PRESENTLY:** BARNES & NOBLE  
**SQUARE FT:** APPROX. **39,000 SF**  
**BASEMENT LEVEL:** APPROX. **2,700 SF**  
**FRONTAGE:** APPROX. 200 FEET

**EXCLUSIVE AGENTS:**

**JOSEPH AQUINO**  
EXECUTIVE VICE PRESIDENT  
[jaquino@elliman.com](mailto:jaquino@elliman.com)

**FAITH HOPE CONSOLO**  
CHAIRMAN, THE RETAIL GROUP  
[fconsolo@elliman.com](mailto:fconsolo@elliman.com)



575 MADISON AVENUE  
3<sup>RD</sup> FLOOR  
TEL. 212. 418. 2020  
FAX. 212. 418. 2005  
[WWW.ELLMAN.COM](http://WWW.ELLMAN.COM)  
[WWW.FAITH-CONSOLO.COM](http://WWW.FAITH-CONSOLO.COM)

© 2007, PRUDENTIAL FINANCIAL. PRUDENTIAL REAL ESTATE BROKERAGE SERVICES ARE OFFERED THROUGH THE INDEPENDENTLY OWNED AND OPERATED NETWORK OF BROKER MEMBER FRANCHISEES OF THE PRUDENTIAL REAL ESTATE AFFILIATES, INC., A PRUDENTIAL FINANCIAL COMPANY. PRUDENTIAL IS A REGISTERED TRADEMARK OF THE PRUDENTIAL INSURANCE COMPANY OF AMERICA. THE INFORMATION ABOVE HAS BEEN OBTAINED FROM SOURCES BELIEVED RELIABLE. WHILE WE DO NOT DOUBT ITS ACCURACY WE HAVE NOT VERIFIED IT AND MAKE NO GUARANTEE, WARRANTY OR REPRESENTATION ABOUT IT. IT IS YOUR RESPONSIBILITY TO INDEPENDENTLY CONFIRM ITS ACCURACY AND COMPLETENESS. ANY PROJECTIONS, OPINIONS, ASSUMPTIONS, OR ESTIMATES USED ARE FOR EXAMPLE ONLY AND DO NOT REPRESENT THE CURRENT OR FUTURE PERFORMANCE OF THE PROPERTY. THE VALUE OF THIS TRANSACTION TO YOU DEPENDS ON TAX AND OTHER FACTORS WHICH SHOULD BE EVALUATED BY YOUR TAX, FINANCIAL AND LEGAL ADVISORS. YOU AND YOUR ADVISORS SHOULD CONDUCT A CAREFUL, INDEPENDENT INVESTIGATION OF THE PROPERTY TO DETERMINE TO YOUR SATISFACTION THE SUITABILITY OF THE PROPERTY FOR YOUR NEEDS.